

CASE: CAST ALUMINUM WITH ASA #70 LIGHT GRAY FINISH.

BEZEL: STAINLESS STEEL - REMOVABLE.
DIAL COLORS: BACKGROUND - BLACK
CHARACTERS - WHITE

POINTER COLOR: WHITE

MAX. INDICATING POINTER COLOR: RED
SWITCH SETTING INDICATOR COLOR: SILVER
LENS: POLYCARBONATE

SWITCH SETTING ADJUSTABILITY: 16°-152°.

SWITCH DIFFERENTIAL: 7.5 °C ± 2.5 °C.

ACCURACY: ± 2% OF DIAL RANGE.

SWITCH RATING: UL/CSA RATING:

10 AMPS AND 1/3 HP @ 125, 250, VAC

1/2 AMP @ 125 VDC (NON-INDUCTIVE)

1/4 AMP @ 250 VDC (NON-INDUCTIVE)

4 AMPS @ 125 VAC "I" (LAMP LOAD)

DIELECTRIC STRENGTH: 1,500 VOLTS TO GROUND FOR 60 SECONDS.

TO ADJUST SWITCH INDICATORS:

A) REMOVE BEZEL AND LENS ASSEMBLY.
B) LOOSEN SCREWS AND MOVE SWITCH SETTING INDICATOR TO DESIRED SETTING. RE-TIGHTEN SCREWS.
C) REPLACE BEZEL AND LENS ASSEMBLY.

TO CHECK SWITCH OPERATION MANUALLY:

A) REMOVE BEZEL AND LENS ASSEMBLY.
B) TURN POINTER CLOCKWISE PAST THE SWITCH SETTING INDICATOR.
C) SLOWLY RETURN THE POINTER TO ITS ORIGINAL POSITION.

D) REPLACE BEZEL AND LENS ASSEMBLY.

CAUTION! POINTER MUST NEVER BE TURNED COUNTERCLOCKWISE.

KIT DATA:

UNIT IS SUPPLIED WITH KIT P/N KIT-009-6 CONSISTING OF:
4 SLEEVES - PROVIDED TO ADAPT SENSING BULB TO VARIOUS THERMOWELL SIZES.

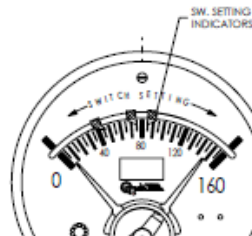
1 WINDING TEMPERATURE LOWER DIAL.

1 LIQUID TEMPERATURE LOWER DIAL.

MODEL NO. 104-666-03

6" REMOTE MT. THERMO (3 SWITCH)

1/2-13 UNC-28 x .42 DP. MFG. INSERT LOCATED ON VERT. CENTER LINE OF UNIT.



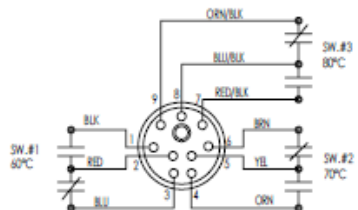
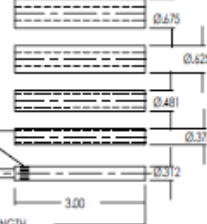
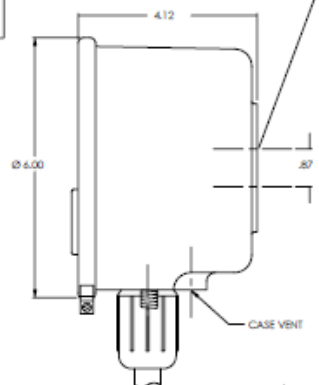
14 AWG - 9 COND. S.O.W. CABLE CONN. ASSY. 720P I.G. CON-661-2

MAX. IND. POINTER RESET KNOB

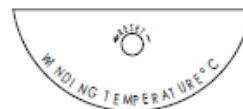
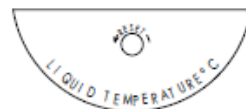
STRAIGHT KNURLING TO INSURE PRESS FITTING OF SLEEVE TO STD. BULB.

192.00 IN. FLEXIBLE SIN. STL. TUBING.

7/8-14 UNF - 2A THD.



SHOWN LOOKING AT MALE INSUL. ASSY. FROM OUTSIDE OF CASE.



PROPRIETARY AND CONFIDENTIAL

THE INFORMATION CONTAINED IN THIS DRAWING IS THE SOLE PROPERTY OF BREAKER SERVICE INC. ANY REPRODUCTION IN PART OR AS A WHOLE WITHOUT THE WRITTEN PERMISSION OF BREAKER SERVICE INC. IS PROHIBITED. COPYRIGHT 2003

BREAKER SERVICE INC
800-826-5250 office 888-267-7690 fax

Universal 6" remote indicating thermometer with 3 switches, 192" capillary and 72" cable. Qualitrol # 104-666-03

SIZE DWG. NO. 37629AMK REC. 0
SCALE: NTS Date: 01-06-2003 SHEET 1 OF 1