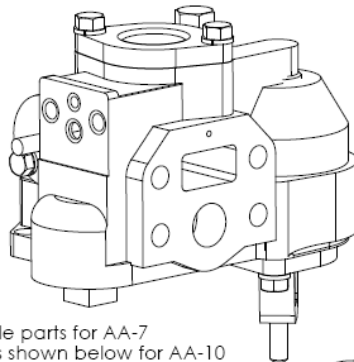
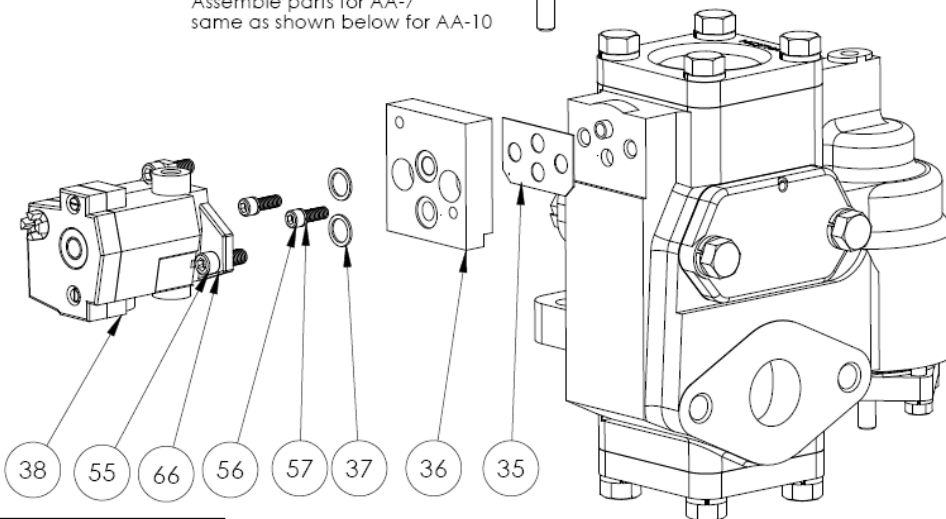


Westinghouse AA-7 main control valve



Assemble parts for AA-7
same as shown below for AA-10



Westinghouse AA-10 main control valve

Item No	BSI part #	Description	Qty
35	30525/37131AMK	gasket	1
36	37990AMK	adapter	1
37	2112470/37124AMK	o-ring	2
38	37450AMK	Ross pilot valve	1
55	37134AMK	socket head cap screw, 1/4-20 x 1"	2
56	38596AMK	socket head cap screw, 3/8-16 x 1"	2
57	37144AMK	lock washer, 3/8"	2
66	37145AMK	lock washer, 1/4"	2

Notes:

1. Always time the breaker before (if possible) and after replacing the pilot valve to ensure proper closing speed.
2. This kit is for use on the mechanisms listed below that are used on oil circuit breakers and the Westinghouse model 2300SF GCB.
3. If replacing a Norgren pilot valve with an external pilot pressure feed into port "P" on the old Norgren pilot valve, remove and discard the pipe plug from port "X1" on the new Ross pilot valve and connect the external pilot pressure tubing to the port on the Ross pilot valve marked "X1". The port on the Ross pilot valve marked "Y3" is the pilot exhaust and should always remain unplugged.

PROPRIETARY AND CONFIDENTIAL
THE INFORMATION CONTAINED IN THIS DRAWING IS THE SOLE PROPERTY OF BREAKER SERVICE INC. ANY REPRODUCTION IN PART OR AS A WHOLE WITHOUT THE WRITTEN PERMISSION OF BREAKER SERVICE INC. IS PROHIBITED.
COPYRIGHT 2005

BREAKER SERVICE INC

800-826-5250 office 888-267-7690 fax

Kit to replace the Westinghouse "magnet valve" pilot valve or Norgren D0035A pilot valve on AA-7, AA-10, & AA-14 W.H. main control valves with a Ross pilot valve - see notes for limitations

SIZE A	DWG. NO. 37993AMK	REV. 4
SCALE: 1:3	Date: 02-18-2005	SHEET 1 OF 1