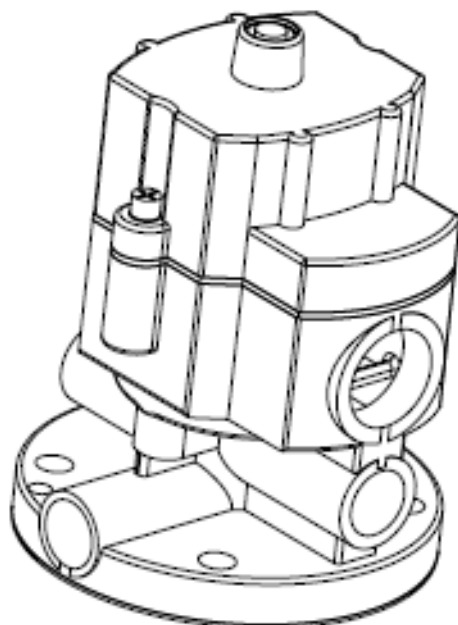




NORGREN ITEMS

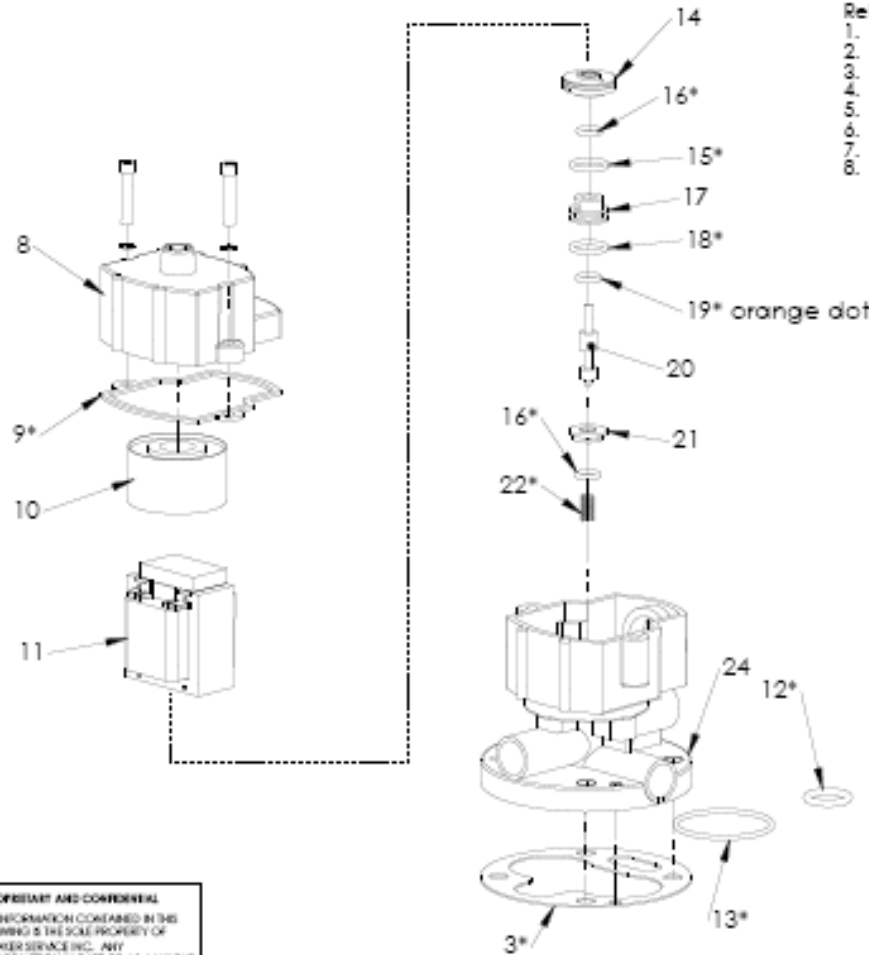


PROPRIETARY AND CONFIDENTIAL
THE INFORMATION CONTAINED IN THIS
DRAWING IS THE SOLE PROPERTY OF
BREAKER SERVICE INC. ANY
REPRODUCTION IN PART OR AS A WHOLE
WITHOUT THE WRITTEN PERMISSION OF
BREAKER SERVICE INC. IS PROHIBITED.
COPYRIGHT 2002

BREAKER SERVICE INC
800-826-5250 office 888-267-7690 fax

Norgren Pilot Valve with coil for
125vac operation

REV A	DWG. NO. 37562AMK	REV. 0
DATE/REV 02/02/2002	SHEET 1 OF 1	

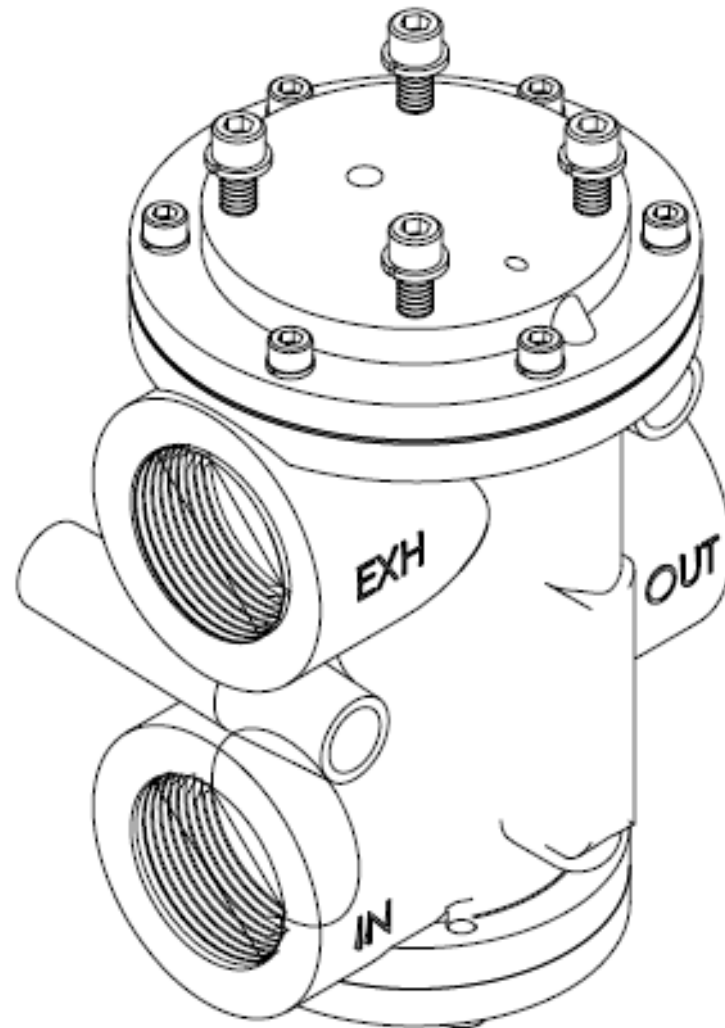


Rebuild instructions:

1. Do not proceed if you are not qualified for this work
2. Make breaker & mechanism safe for work
3. Disassemble and gently clean valve
4. Reassemble using new seals per drawing
5. Items 12 & 13 are used with older main valves
6. Item 3 is used with newer main valves
7. Take special note of the location of item 19
8. Springly lubricate orings with Parker Superlube

PROPRIETARY AND CONFIDENTIAL
 THE INFORMATION CONTAINED IN THIS
 DRAWING IS THE SOLE PROPERTY OF
 BREAKER SERVICE INC. ANY
 REPRODUCTION IN PART OR AS A WHOLE
 WITHOUT THE WRITTEN PERMISSION OF
 BREAKER SERVICE INC. IS PROHIBITED.
 COPYRIGHT 2005

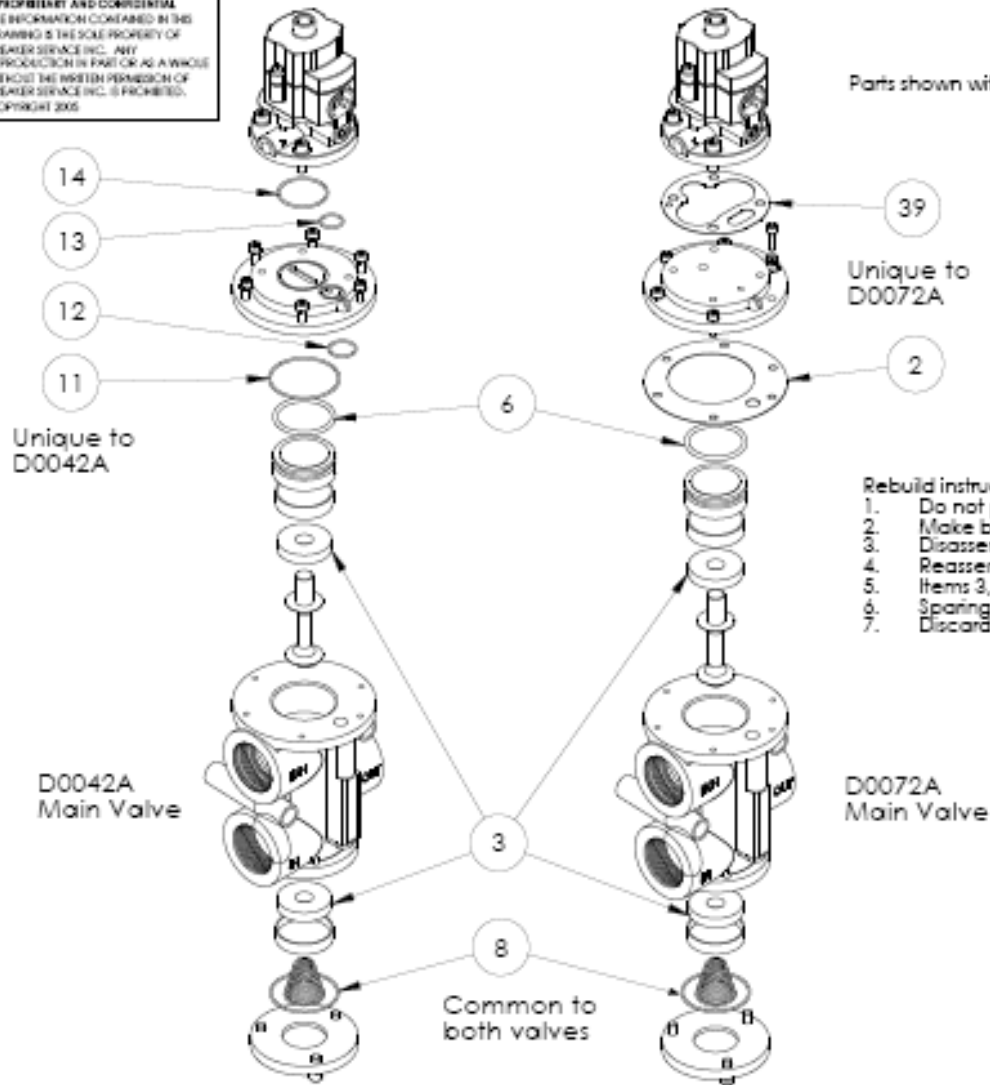
BREAKER SERVICE INC		
800-828-5250 office 888-267-7690 fax		
Rebuild kit for Norgren pilot valve model D0035C or D00105.		
Items shown with asterisk * are included in this repair kit		
REV A	DWG. NO. 15028	REV. O
SCALE: N/A	Date: 04-10-2005	SHEET 1 OF 1



PROPRIETARY AND CONFIDENTIAL
THE INFORMATION CONTAINED IN THIS
DRAWING IS THE SOLE PROPERTY OF
BREAKER SERVICE INC. ANY
REPRODUCTION IN PART OR AS A WHOLE
WITHOUT THE WRITTEN PERMISSION OF
BREAKER SERVICE INC. IS PROHIBITED.
COPYRIGHT 2000

BREAKER SERVICE INC	
800-826-5250 office 888-267-7690 fax	
Nargren main valve Used in Siemens & Westinghouse type SP breakers	
SIZE A	DWG. NO. 37480AMK
DATE 02-02-2002	REV 0
SHEET 1 OF 1	

PROPRIETARY AND CONFIDENTIAL
 THE INFORMATION CONTAINED IN THIS
 DRAWING IS THE SOLE PROPERTY OF
 BREAKER SERVICE INC. ANY
 REPRODUCTION IN PART OR AS A WHOLE
 WITHOUT THE WRITTEN PERMISSION OF
 BREAKER SERVICE INC. IS PROHIBITED.
 COPYRIGHT 2005



Parts shown with item numbers are included in the rebuild kit

Unique to
D0072A

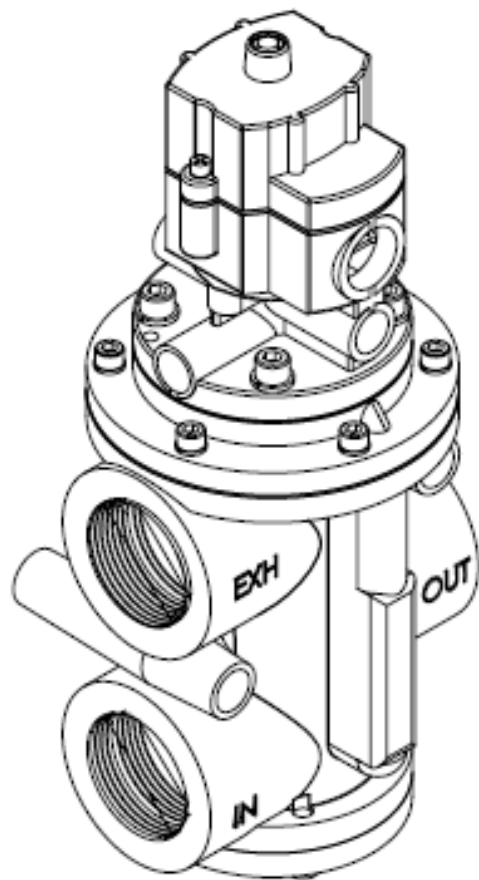
Unique to
D0042A

D0042A
Main Valve

D0072A
Main Valve

- Rebuild instructions:
1. Do not proceed if you are not qualified for this work
 2. Make breaker & mechanism safe for work
 3. Disassemble and gently clean valve
 4. Reassemble using new seals per drawing
 5. Items 3, 6 & 8 are common to both valves
 6. Sparingly lubricate o-rings with Parker Superlube
 7. Discard unused parts

BREAKER SERVICE INC		
800-826-5250 office 888-267-7690 fax		
Rebuild kit for Norgren D0042A or D0072A main control valve used on Siemens & Westinghouse type SP gas circuit breakers		
REV	DWG. NO.	15031AMK
SCALE	DATE	SHEET
	01-10-2005	1 OF 1



PROPRIETARY AND CONFIDENTIAL

THE INFORMATION CONTAINED IN THIS DRAWING IS THE SOLE PROPERTY OF BREAKER SERVICE INC. ANY REPRODUCTION IN PART OR AS A WHOLE WITHOUT THE WRITTEN PERMISSION OF BREAKER SERVICE INC. IS PROHIBITED. COPYRIGHT 2002

BREAKER SERVICE INC

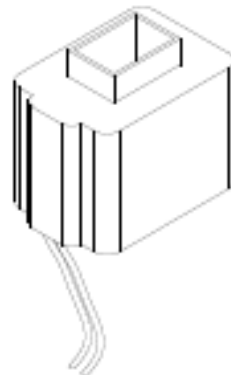
800-525-5250 office 888-257-7690 fax

Norgren pilot & main valve assembly with coil for 125vac operation. Used in Siemens & Westinghouse type SP breakers

REV | DWG. NO. | REV
A | 37479AMK | 0

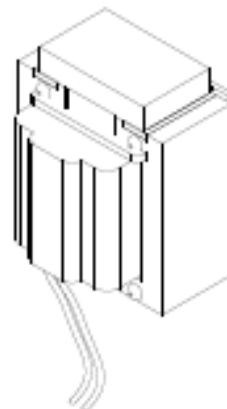
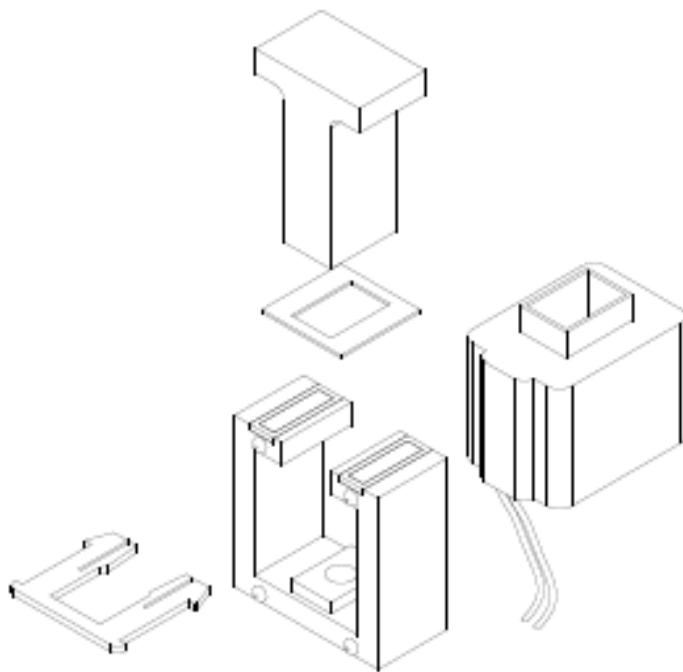
DCAN001 | DATE: 02-02-2002 | SHEET 1 OF 1

Coil Assembly shown for reference only
See BSI part # 37062AMK for complete assembly



PROPRIETARY AND CONFIDENTIAL
THE INFORMATION CONTAINED IN THIS
DRAWING IS THE SOLE PROPERTY OF
BREAKER SERVICE INC. ANY
REPRODUCTION IN PART OR AS A WHOLE
WITHOUT THE WRITTEN PERMISSION OF
BREAKER SERVICE INC. IS PROHIBITED.
COPYRIGHT 2004

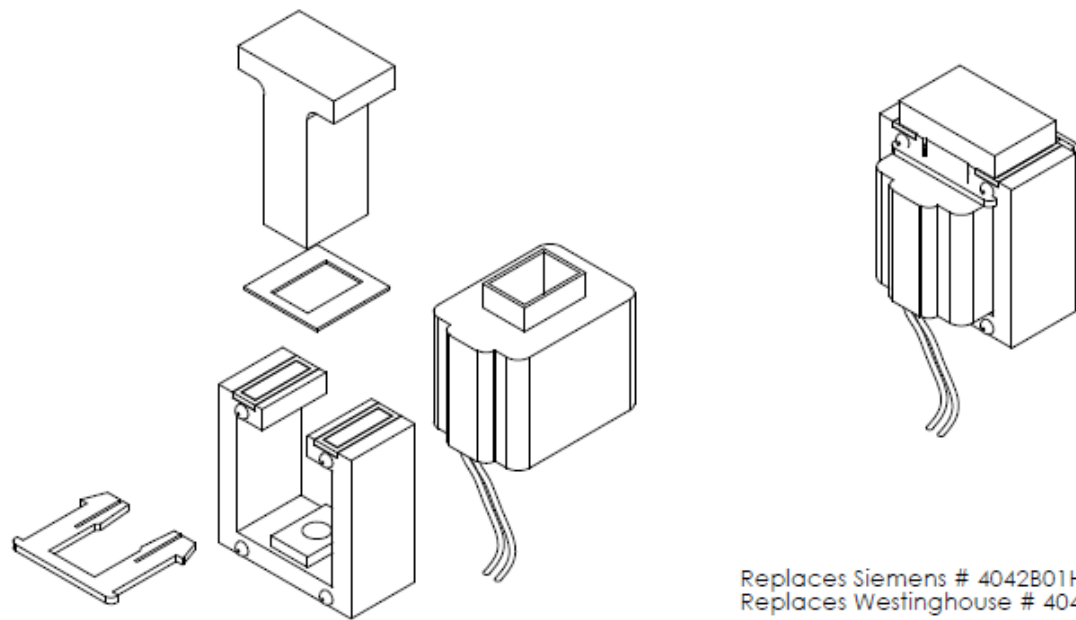
BREAKER SERVICE INC 800-826-5250 office 800-267-7890 fax	
Solenoid Coil Only for Norgren Pilot Valve # D0035C 125 /250 VDC	
REV A	DESC. NO. 37650AMK
SCALE	Date: 07-03-2004
SHEET 1 OF 1	



Replaces Siemens # 4042B01H10
 Replaces Westinghouse # 4042B01H10

PROPRIETARY AND CONFIDENTIAL
 THE INFORMATION CONTAINED IN THIS
 DRAWING IS THE SOLE PROPERTY OF
 BREAKER SERVICE INC. ANY
 REPRODUCTION IN PART OR AS A WHOLE
 WITHOUT THE WRITTEN PERMISSION OF
 BREAKER SERVICE INC. IS PROHIBITED.
 COPYRIGHT 2004

BREAKER SERVICE INC			
800-826-5250 office 866-267-7690 fax			
Solenoid Assy for Norgren Pilot Valve # D0035C 125/250VDC			
REV	QTY	DATE	BY
A			37062AMK
SCALE: 1:1	Date: 07-02-2004	SHEET 1 OF 1	

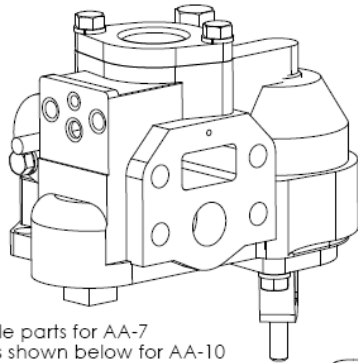


Replaces Siemens # 4042B01H09
 Replaces Westinghouse # 4042B01H09

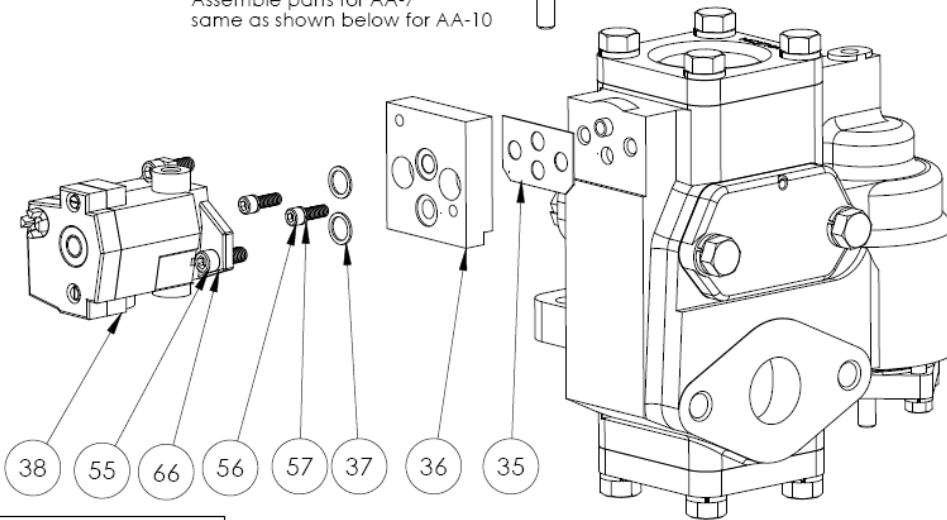
PROPRIETARY AND CONFIDENTIAL
 THE INFORMATION CONTAINED IN THIS
 DRAWING IS THE SOLE PROPERTY OF
 BREAKER SERVICE INC. ANY
 REPRODUCTION IN PART OR AS A WHOLE
 WITHOUT THE WRITTEN PERMISSION OF
 BREAKER SERVICE INC. IS PROHIBITED.
 COPYRIGHT 2004

BREAKER SERVICE INC		
800-826-5250 office 888-267-7690 fax		
Solenoid Assy for Norgren Pilot Valve # D0035C 48 VDC		
SIZE A	DWG. NO. 38218AMK	REV. 0
SCALE:1:1	Date: 07-02-2004	SHEET 1 OF 1

Westinghouse AA-7 main control valve



Assemble parts for AA-7
same as shown below for AA-10



Westinghouse AA-10 main control valve

Item No	BSI part #	Description	Qty
35	30525/37131AMK	gasket	1
36	37990AMK	adapter	1
37	2112470/37124AMK	o-ring	2
38	37450AMK	Ross pilot valve	1
55	37134AMK	socket head cap screw, 1/4-20 x 1"	2
56	38596AMK	socket head cap screw, 3/8-16 x 1"	2
57	37144AMK	lock washer, 3/8"	2
66	37145AMK	lock washer, 1/4"	2

Notes:

1. Always time the breaker before (if possible) and after replacing the pilot valve to ensure proper closing speed.
2. This kit is for use on the mechanisms listed below that are used on oil circuit breakers and the Westinghouse model 2300SF GCB.
3. If replacing a Norgren pilot valve with an external pilot pressure feed into port "P" on the old Norgren pilot valve, remove and discard the pipe plug from port "X1" on the new Ross pilot valve and connect the external pilot pressure tubing to the port on the Ross pilot valve marked "X1". The port on the Ross pilot valve marked "Y3" is the pilot exhaust and should always remain unplugged.

PROPRIETARY AND CONFIDENTIAL
THE INFORMATION CONTAINED IN THIS DRAWING IS THE SOLE PROPERTY OF BREAKER SERVICE INC. ANY REPRODUCTION IN PART OR AS A WHOLE WITHOUT THE WRITTEN PERMISSION OF BREAKER SERVICE INC. IS PROHIBITED.
COPYRIGHT 2005

BREAKER SERVICE INC			
800-826-5250 office 888-267-7690 fax			
Kit to replace the Westinghouse "magnet valve" pilot valve or Norgren D0035A pilot valve on AA-7, AA-10, & AA-14 W.H. main control valves with a Ross pilot valve - see notes for limitations			
SIZE A	DWG. NO. 37993AMK	REV. 4	
SCALE: 1:3	Date: 02-18-2005	SHEET 1 OF 1	