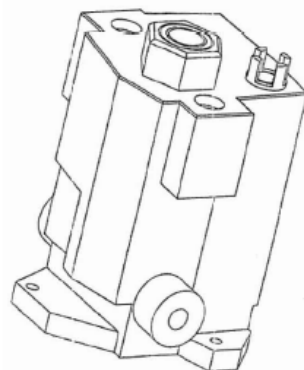


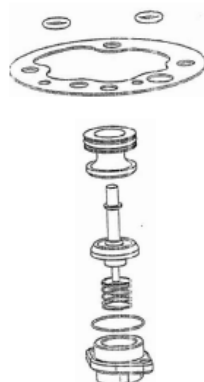


AA-7

MECHANISM

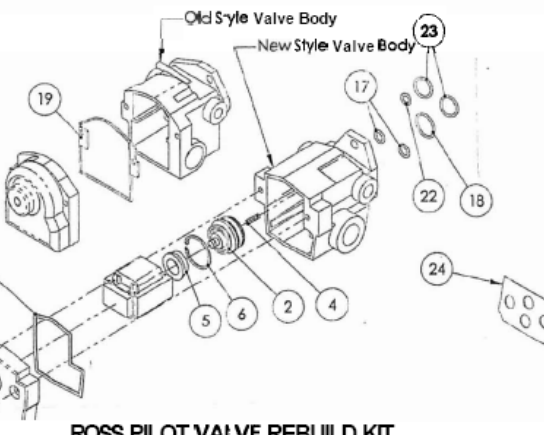


ROSS PILOT
BSI PART 37450AMK

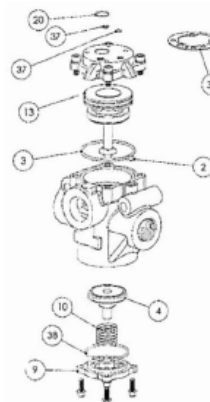


1/4, 3/8 & 1/2
BSI 37887AMK

ROSS MAIN CONTROL VALVE REPAIR KIT
1/2, 3/4 & 1
BSI 37169AMK



ROSS PILOT VALVE REBUILD KIT
BSI KIT K12274



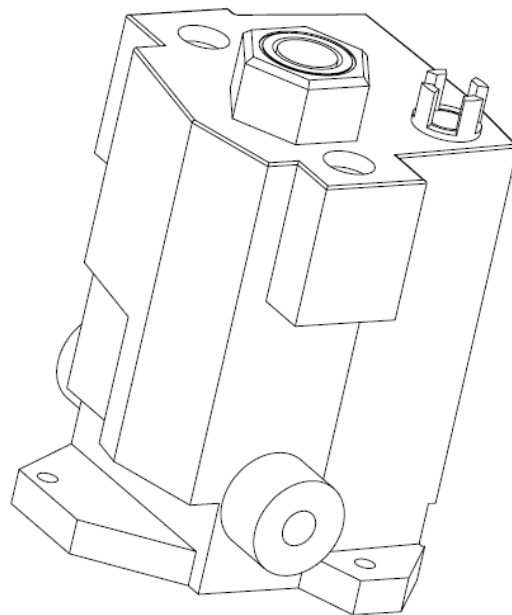
1-1/4 & 1-1/2
BSI 37882AMK

PROPRIETARY AND CONFIDENTIAL
THE INFORMATION CONTAINED IN THIS
DRAWING IS THE SOLE PROPERTY OF
BREAKER SERVICE INC. ANY
REPRODUCTION IN PART OR AS A WHOLE
WITHOUT THE WRITTEN PERMISSION OF
BREAKER SERVICE INC. IS PROHIBITED.
COPYRIGHT 2002

INCLUDES QTY 1 EACH:
37450AMK, K12274, 37887AMK, 37169AMK & 37882AMK

BREAKER SERVICE INC
800-926-5250 office 838-267-7690 fax
ROSS VALVE FIRST AID KIT
REPAIRS ALL ROSS MAIN
& PILOT VALVES

SIZE A	DWG. NO. 38275AMK	REV. 0
SCALE: NTS	Date:	SHEET 1 OF 1



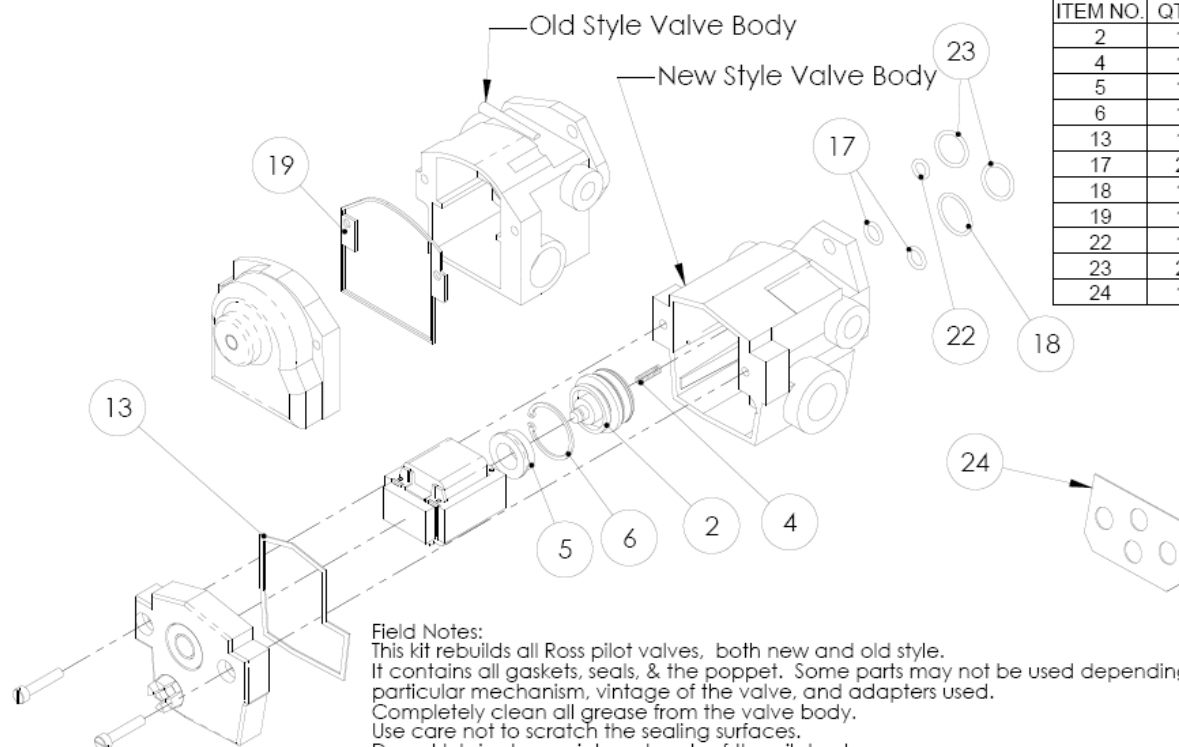
PROPRIETARY AND CONFIDENTIAL
THE INFORMATION CONTAINED IN THIS
DRAWING IS THE SOLE PROPERTY OF
BREAKER SERVICE INC. ANY
REPRODUCTION IN PART OR AS A WHOLE
WITHOUT THE WRITTEN PERMISSION OF
BREAKER SERVICE INC. IS PROHIBITED.
COPYRIGHT 2002

BREAKER SERVICE INC

800-826-5250 office 888-267-7690 fax

Ross Pilot Valve with coil for
125vdc operation

SIZE A	DWG. NO. 37450AMK	REV. 0
SCALE:1:1	Date: 02-02-2002	SHEET 1 OF 1



ITEM NO.	QTY.	DESCRIPTION
2	1	poppet assembly
4	1	spring
5	1	bumper
6	1	retaining ring
13	1	new style cover gasket
17	2	o-ring
18	1	o-ring
19	1	old style cover gasket
22	1	o-ring
23	2	o-ring
24	1	gasket

Field Notes:

This kit rebuilds all Ross pilot valves, both new and old style. It contains all gaskets, seals, & the poppet. Some parts may not be used depending on the particular mechanism, vintage of the valve, and adapters used. Completely clean all grease from the valve body.

Use care not to scratch the sealing surfaces.

Do not lubricate any internal parts of the pilot valve.

There should be only one spring in the pilot valve - it is located under the poppet as shown in the drawing.

If the sealing surfaces are scored, then the valve must be replaced.

Time the breaker before (if possible) and after rebuilding the pilot valve.

Use item 23 & 24 for the Westinghouse style main control valve with adapter block.

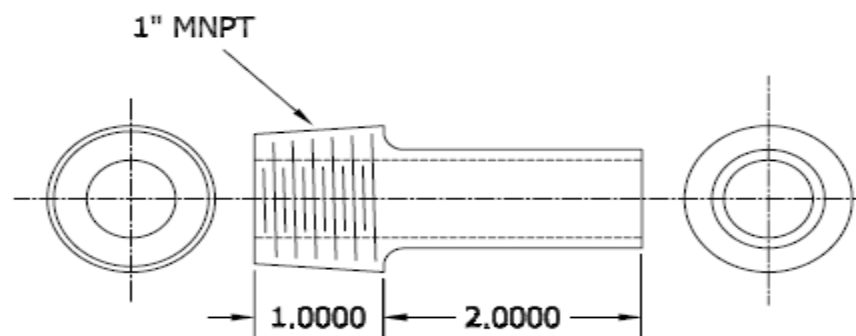
Use items 17 for Ross main valves with ports 1" & smaller

Use items 18 & 22 for Ross main valves with ports larger than 1"

The internal parts (items 2, 4, 5, & 6) are the same for the old & new style pilot valve bodies, but not illustrated above for the old style valve body.

PROPRIETARY AND CONFIDENTIAL
THE INFORMATION CONTAINED IN THIS DRAWING IS THE SOLE PROPERTY OF BREAKER SERVICE INC.. ANY REPRODUCTION IN PART OR AS A WHOLE WITHOUT THE WRITTEN PERMISSION OF BREAKER SERVICE INC. IS PROHIBITED. COPYRIGHT 2002

BREAKER SERVICE INC		
800-826-5250 office 888-267-7690 fax		
Ross pilot valve rebuild kit		
SIZE A	DWG. NO. 12274	REV. 6
SCALE: 1:2.5 Date: 09-02-2003		SHEET 1 OF 1



Field Installation Note:
Cut smooth end to length in field

Property of Breaker Service Inc.
Proprietary & Confidential.
All rights reserved. © Copyright 2000.

Tolerances $\pm .003$

Breaker Service Inc

800-826-5250 office
888-267-7690 fax

Adapter for Westinghouse AA-7 operating mechanism. This adapter threads into the 1" female NPT intake port of the Ross main valve body. The other side of the adapter is smooth to accept a dresser coupling.

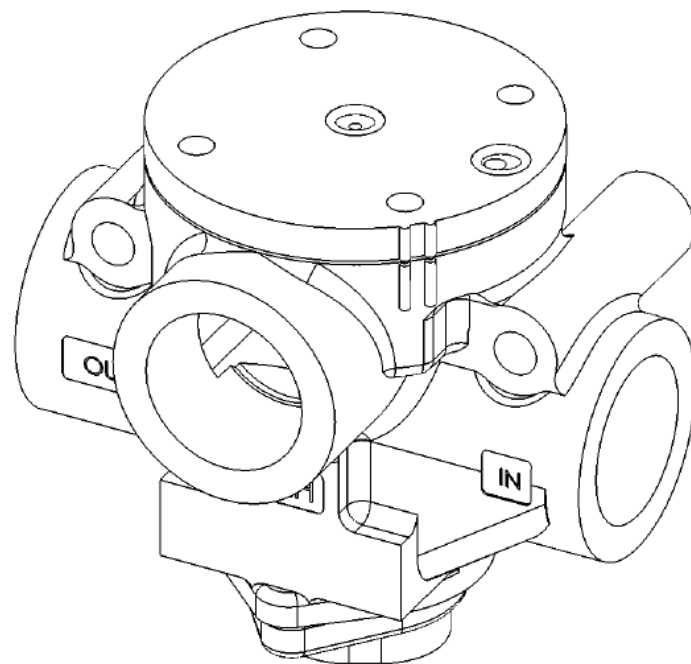
SCALE 1:1 16-Mar-2001

SHEET 1 of 1

SIZE A

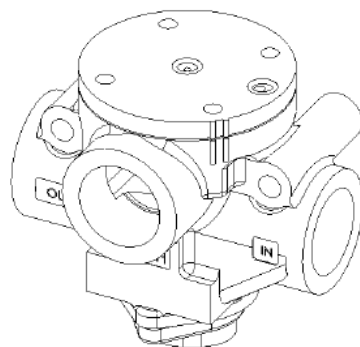
DRW# 37378AMK

REV
0

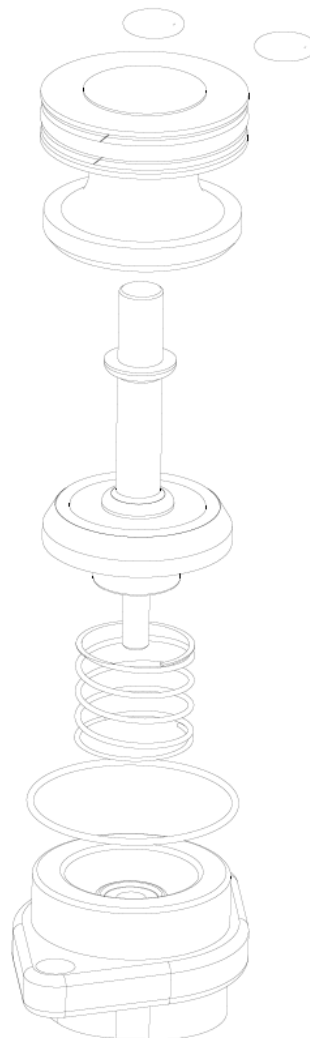


PROPRIETARY AND CONFIDENTIAL
THE INFORMATION CONTAINED IN THIS
DRAWING IS THE SOLE PROPERTY OF
BREAKER SERVICE INC. ANY
REPRODUCTION IN PART OR AS A WHOLE
WITHOUT THE WRITTEN PERMISSION OF
BREAKER SERVICE INC. IS PROHIBITED.
COPYRIGHT 2003

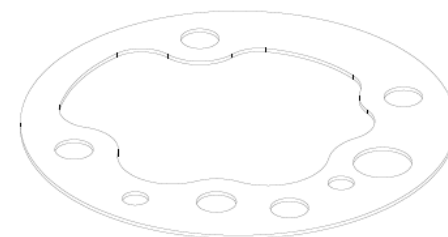
BREAKER SERVICE INC 800-826-5250 office 888-267-7690 fax		
Ross main control valve for Westinghouse AA-7 mechanism		
SIZE A	DWG. NO. 37451AMK	REV. 0
SCALE 1:1	Date: 02-02-2003	SHEET 1 OF 1



Valve body shown
for reference only



All parts shown are
included in the rebuild kit



PROPRIETARY AND CONFIDENTIAL
THE INFORMATION CONTAINED IN THIS
DRAWING IS THE SOLE PROPERTY OF
BREAKER SERVICE INC. ANY
REPRODUCTION IN PART OR AS A WHOLE
WITHOUT THE WRITTEN PERMISSION OF
BREAKER SERVICE INC. IS PROHIBITED.
COPYRIGHT 2003

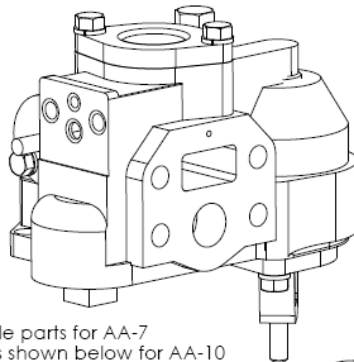
BREAKER SERVICE INC
800-826-5250 office 888-267-7690 fax

Rebuild kit for Ross main control
valve for Westinghouse AA-7
mechanism

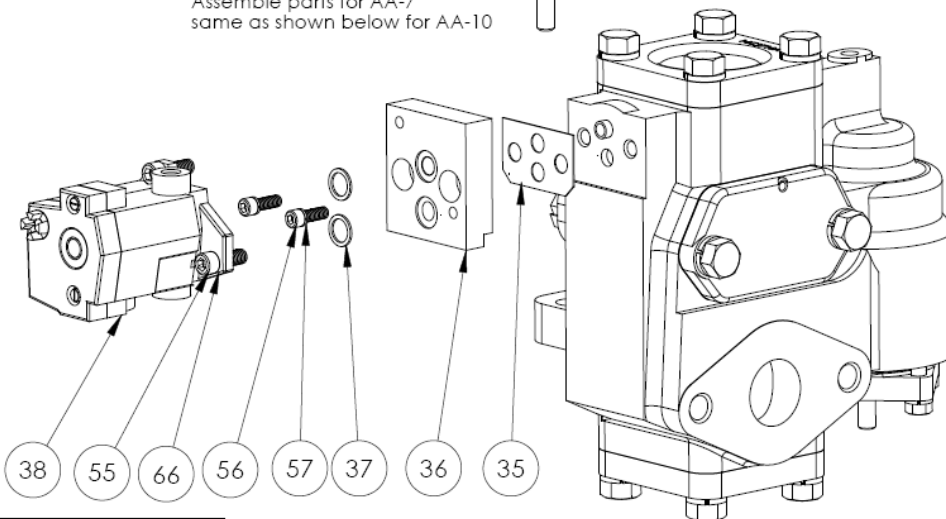
SIZE **A** DWG. NO. **37169AMK** REV. **0**

SCALE 1:1 Date: 09-20-2004 SHEET 1 OF 1

Westinghouse AA-7 main control valve



Assemble parts for AA-7
same as shown below for AA-10



Westinghouse AA-10 main control valve

Item No	BSI part #	Description	Qty
35	30525/37131AMK	gasket	1
36	37990AMK	adapter	1
37	2112470/37124AMK	o-ring	2
38	37450AMK	Ross pilot valve	1
55	37134AMK	socket head cap screw, 1/4-20 x 1"	2
56	38596AMK	socket head cap screw, 3/8-16 x 1"	2
57	37144AMK	lock washer, 3/8"	2
66	37145AMK	lock washer, 1/4"	2

Notes:

1. Always time the breaker before (if possible) and after replacing the pilot valve to ensure proper closing speed.
2. This kit is for use on the mechanisms listed below that are used on oil circuit breakers and the Westinghouse model 2300SF GCB.
3. If replacing a Norgren pilot valve with an external pilot pressure feed into port "P" on the old Norgren pilot valve, remove and discard the pipe plug from port "X1" on the new Ross pilot valve and connect the external pilot pressure tubing to the port on the Ross pilot valve marked "X1". The port on the Ross pilot valve marked "Y3" is the pilot exhaust and should always remain unplugged.

PROPRIETARY AND CONFIDENTIAL
THE INFORMATION CONTAINED IN THIS
DRAWING IS THE SOLE PROPERTY OF
BREAKER SERVICE INC. ANY
REPRODUCTION IN PART OR AS A WHOLE
WITHOUT THE WRITTEN PERMISSION OF
BREAKER SERVICE INC. IS PROHIBITED.
COPYRIGHT 2005

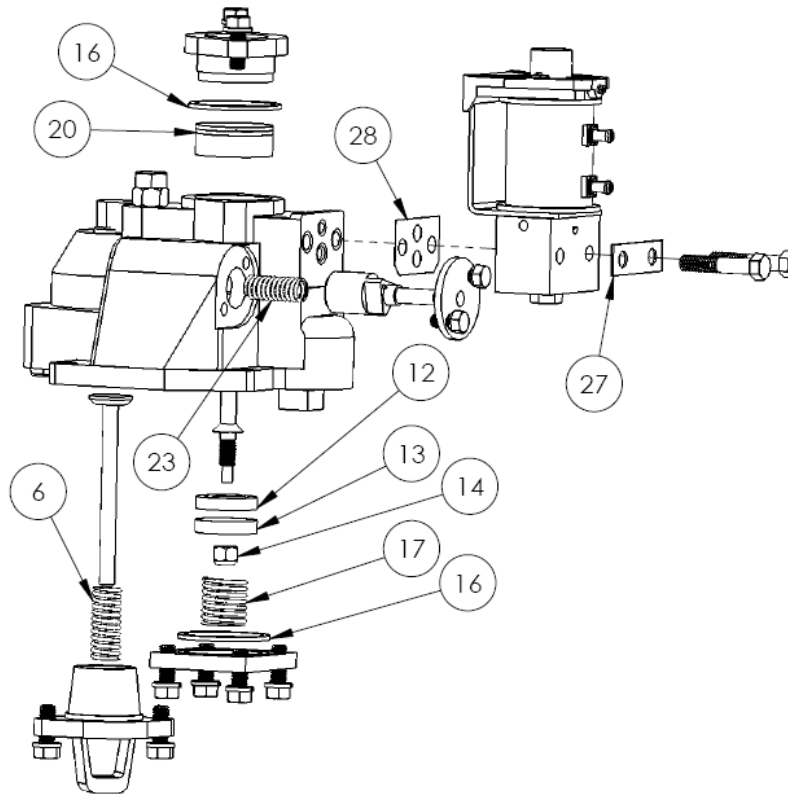
BREAKER SERVICE INC

800-826-5250 office 888-267-7690 fax

Kit to replace the Westinghouse
"magnet valve" pilot valve or
Norgren D0035A pilot valve on
AA-7, AA-10, & AA-14 W.H. main
control valves with a Ross pilot
valve - see notes for limitations

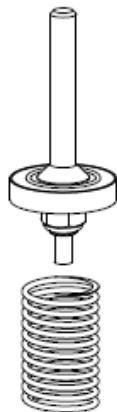
SIZE A	DWG. NO. 37993AMK	REV. 4
SCALE: 1:3	Date: 02-18-2005	SHEET 1 OF 1

ITEM NO.	QTY.	PART NO.	DESCRIPTION
6	1	37748AMK	Spring 1735863 / 1D61130H05 / 5086B49H06
12	1	30614	Valve Disc 1644478 / 24D9629H01 / 5086B49H03
13	1	30615	Disc Support SST 1644475 / 22D8972H02 / 5086B49H12
14	1	37753AMK	Elastic Stop Nut 1627943 / 70220DAN1B / 5086B49H11
16	2	22343	O-ring 1644476 / 5492C46H19 / 5086B49H07
17	1	37749AMK	Spring 1644423 / 23D2758H04 / 5086B49H04
20	1	37751AMK	Piston Ring 1644477 / 534539 / 23B2997H31 / 5086B49H02
23	1	37750AMK	Spring 1644424 / 23D2758H05 / 5086B49H05
27	1	37747AMK	Locking Clip 1216890 / 6D8917H18 / 5086B49H09
28	1	30525 / 37131AMK	Gasket 1589255 / 1659B85H01 / 5086B49H08

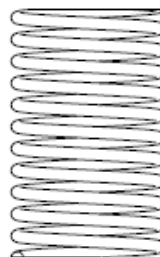


PROPRIETARY AND CONFIDENTIAL
THE INFORMATION CONTAINED IN THIS
DRAWING IS THE SOLE PROPERTY OF
BREAKER SERVICE INC. ANY
REPRODUCTION IN PART OR AS A WHOLE
WITHOUT THE WRITTEN PERMISSION OF
BREAKER SERVICE INC. IS PROHIBITED.
COPYRIGHT 2003

BREAKER SERVICE INC			
800-826-5250 office 888-267-7690 fax			
Kit to rebuild Westinghouse AA-7 Main Control Valve			
SIZE A	DWG. NO. 37746AMK	REV. 3	
SCALE 1:2.5 Date: 07-25-2003		SHEET 1 OF 1	

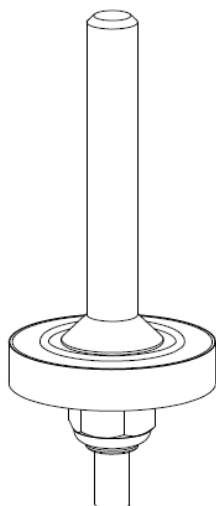


Complete Stem Assy
Shown for Reference
Only

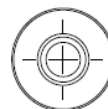
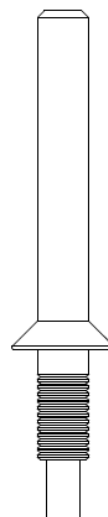
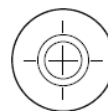


PROPRIETARY AND CONFIDENTIAL
THE INFORMATION CONTAINED IN THIS
DRAWING IS THE SOLE PROPERTY OF
BREAKER SERVICE INC. ANY
REPRODUCTION IN PART OR AS A WHOLE
WITHOUT THE WRITTEN PERMISSION OF
BREAKER SERVICE INC. IS PROHIBITED.
COPYRIGHT 2006

BREAKER SERVICE INC			
800-826-5250 office 888-267-7690 fax			
Spring under stem in main control valve on AA-7 mechanism			
SIZE A	DWG. NO. 37749AMK	REV. 0	
SCALE 1:1	Date: 02-02-2006	SHEET 1 OF 1	

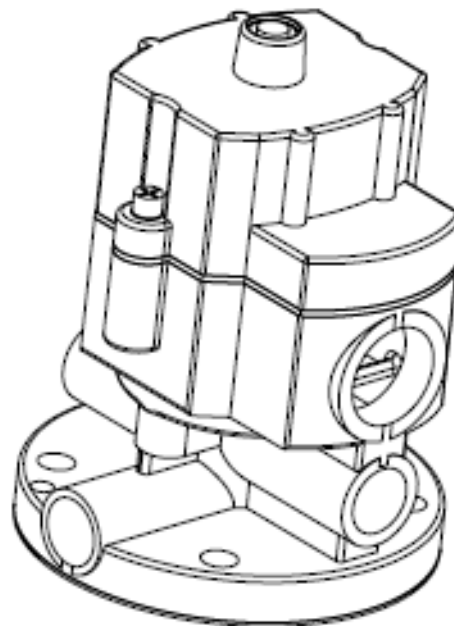


Complete Stem Assy
Shown for Reference
Only



PROPRIETARY AND CONFIDENTIAL
THE INFORMATION CONTAINED IN THIS
DRAWING IS THE SOLE PROPERTY OF
BREAKER SERVICE INC. ANY
REPRODUCTION IN PART OR AS A WHOLE
WITHOUT THE WRITTEN PERMISSION OF
BREAKER SERVICE INC. IS PROHIBITED.
COPYRIGHT 2006

BREAKER SERVICE INC			
800-826-5250 office 888-267-7690 fax			
Stem on AA-7 main control valve			
SIZE A	DWG. NO. 38238AMK	REV. 0	
SCALE 1:1	Date: 02-02-2006	SHEET 1 OF 1	



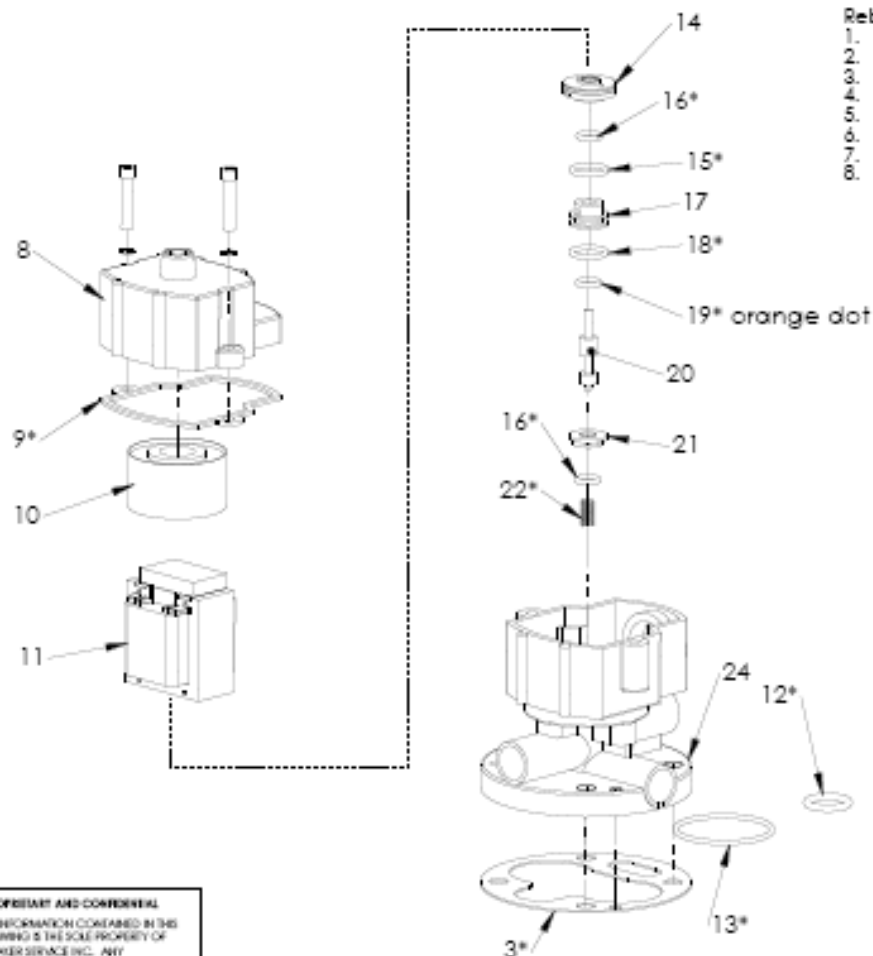
PROPRIETARY AND CONFIDENTIAL
THE INFORMATION CONTAINED IN THIS
DRAWING IS THE SOLE PROPERTY OF
BREAKER SERVICE INC.. ANY
REPRODUCTION IN PART OR AS A WHOLE
WITHOUT THE WRITTEN PERMISSION OF
BREAKER SERVICE INC. IS PROHIBITED.
COPYRIGHT 2002

BREAKER SERVICE INC

800-826-5250 office 888-267-7690 fax

Norgren Pilot Valve with coil for
125vac operation

REV A	DWG. NO. 37562AMK	REV 0
DATE/REV	DATE: 02-02-2002	SHEET 1 OF 1

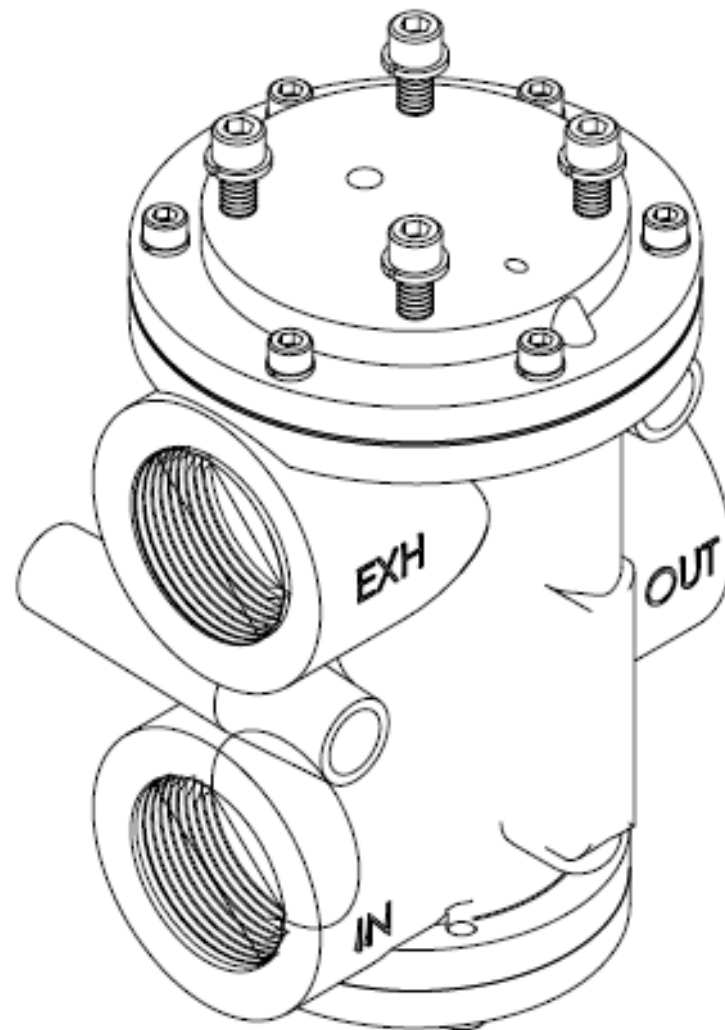


Rebuild instructions:

1. Do not proceed if you are not qualified for this work
2. Make breaker & mechanism safe for work
3. Disassemble and gently clean valve
4. Reassemble using new seals per drawing
5. Items 12 & 13 are used with older main valves
6. Item 3 is used with newer main valves
7. Take special note of the location of item 19
8. Sparingly lubricate orings with Parker Superlube

PROPRIETARY AND CONFIDENTIAL
 THE INFORMATION CONTAINED IN THIS
 DRAWING IS THE SOLE PROPERTY OF
 BREAKER SERVICE INC. ANY
 REPRODUCTION IN PART OR AS A WHOLE
 WITHOUT THE WRITTEN PERMISSION OF
 BREAKER SERVICE INC. IS PROHIBITED.
 COPYRIGHT 2005

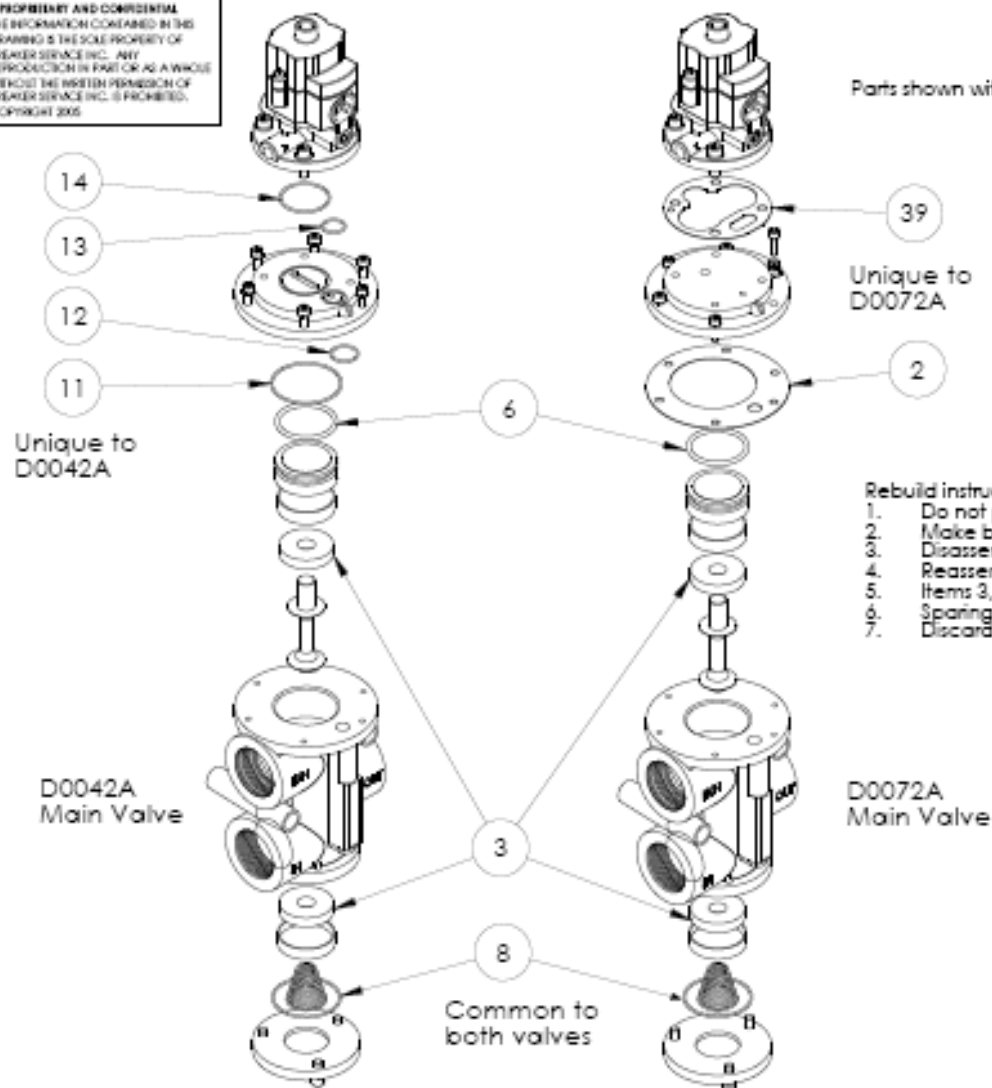
BREAKER SERVICE INC 800-826-5250 office 888-267-7690 fax		
Rebuild kit for Norgren pilot valve model D0035C or D00105.		
Items shown with asterisk * are included in this repair kit		
Dwg. No. A	15028	REV. 0
SCALE: N/A	Date: 04-10-2005	SHEET 1 OF 1



PROPRIETARY AND CONFIDENTIAL
 THE INFORMATION CONTAINED IN THIS
 DRAWING IS THE SOLE PROPERTY OF
 BREAKER SERVICE INC. ANY
 REPRODUCTION IN PART OR AS A WHOLE
 WITHOUT THE WRITTEN PERMISSION OF
 BREAKER SERVICE INC. IS PROHIBITED.
 COPYRIGHT 2002

BREAKER SERVICE INC 800-826-5250 office 888-267-7690 fax			
Nargren main valve Used in Siemens & Westinghouse type SP breakers			
SIZE A	DWG. NO. 37480AMK	REV 0	
DRAWN BY [blank]	DATE 02-02-2002	SHEET 1 OF 1	

PROPRIETARY AND CONFIDENTIAL
THE INFORMATION CONTAINED IN THIS
DRAWING IS THE SOLE PROPERTY OF
BREAKER SERVICE INC. ANY
REPRODUCTION IN PART OR AS A WHOLE
WITHOUT THE WRITTEN PERMISSION OF
BREAKER SERVICE INC. IS PROHIBITED.
COPYRIGHT 2005



Parts shown with item numbers are included in the rebuild kit

Rebuild instructions:

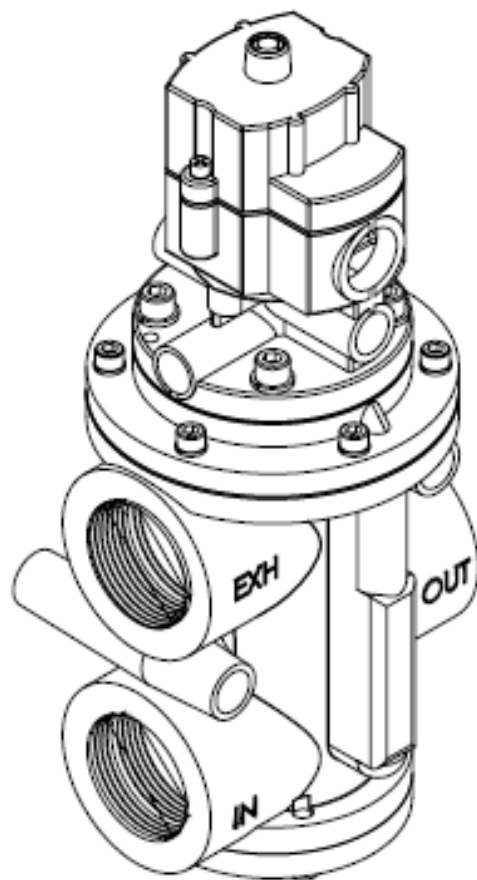
1. Do not proceed if you are not qualified for this work
2. Make breaker & mechanism safe for work
3. Disassemble and gently clean valve
4. Reassemble using new seals per drawing
5. Items 3, 6 & 8 are common to both valves
6. Sparingly lubricate rings with Parker Superlube
7. Discard unused parts

BREAKER SERVICE INC.

800-826-5250 office 888-267-7690 fax

Rebuild kit for Norgren D0042A or
D0072A main control valve used
on Siemens & Westinghouse type
SP gas circuit breakers

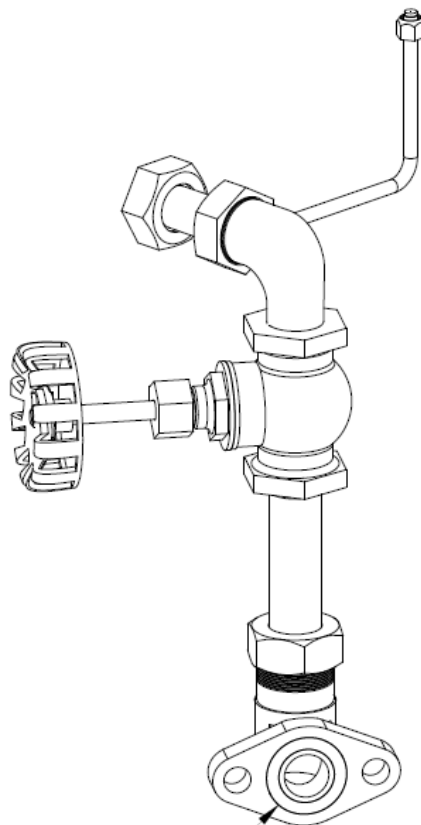
REV A	DWG. NO. 15031AMK	REV 0
SCALE 1:1		DATE 01-10-2005
		SHEET 1 OF 1



PROPRIETARY AND CONFIDENTIAL
 THE INFORMATION CONTAINED IN THIS
 DRAWING IS THE SOLE PROPERTY OF
 BREAKER SERVICE INC.. ANY
 REPRODUCTION IN PART OR AS A WHOLE
 WITHOUT THE WRITTEN PERMISSION OF
 BREAKER SERVICE INC. IS PROHIBITED.
 COPYRIGHT 2002

BREAKER SERVICE INC
 800-525-5250 office 888-257-7690 fax
 Norgren pilot & main valve
 assembly with coil for 125vdc
 operation. Used in Siemens &
 Westinghouse type SP breakers

SIZE	DWG. NO.	REV.
A	37479AMK	0
SCALE	DATE	SHEET 1 OF 1
1:1	02-02-2002	



Gasket between air tank
& manifold flange

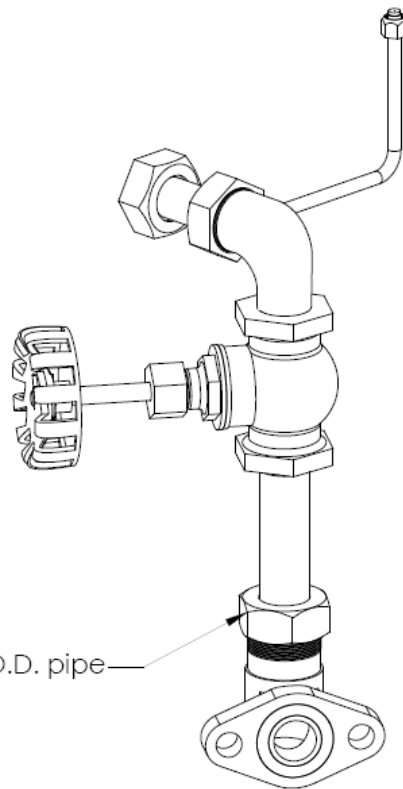
PROPRIETARY AND CONFIDENTIAL
THE INFORMATION CONTAINED IN THIS
DRAWING IS THE SOLE PROPERTY OF
BREAKER SERVICE INC.. ANY
REPRODUCTION IN PART OR AS A WHOLE
WITHOUT THE WRITTEN PERMISSION OF
BREAKER SERVICE INC. IS PROHIBITED.
COPYRIGHT 2003

BREAKER SERVICE INC

800-826-5250 office 888-267-7690 fax

Gasket - air tank to flange
for AA-7 mechanism

SIZE A	DWG. NO. 37396AMK	REV. 0
SCALE 1:3	Date: 02-02-2003	SHEET 1 OF 1



Assy includes nut, gasket, &
gasket retainer cup for 1.05" O.D. pipe—

PROPRIETARY AND CONFIDENTIAL
THE INFORMATION CONTAINED IN THIS
DRAWING IS THE SOLE PROPERTY OF
BREAKER SERVICE INC. ANY
REPRODUCTION IN PART OR AS A WHOLE
WITHOUT THE WRITTEN PERMISSION OF
BREAKER SERVICE INC. IS PROHIBITED.
COPYRIGHT 2003

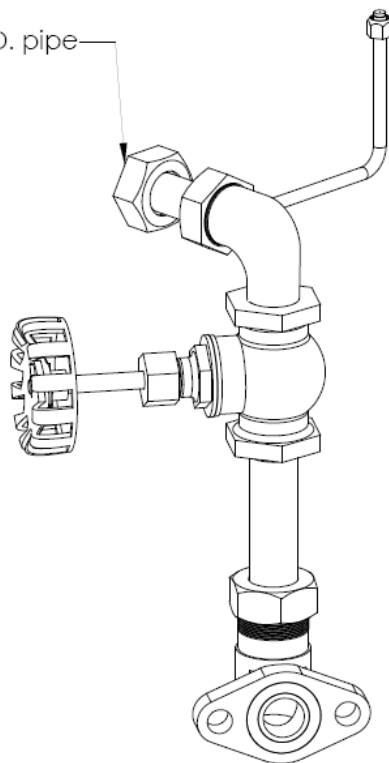
BREAKER SERVICE INC

800-826-5250 office 888-267-7690 fax

Dresser nut & gasket assy for
1.05" O.D. manifold pipe
on AA-7 mechanisms

SIZE A	DWG. NO. 37395AMK	REV. 0
SCALE 1:3	Date: 02-02-2003	SHEET 1 OF 1

Assy includes nut, gasket, &
gasket retainer cup for 0.875" O.D. pipe

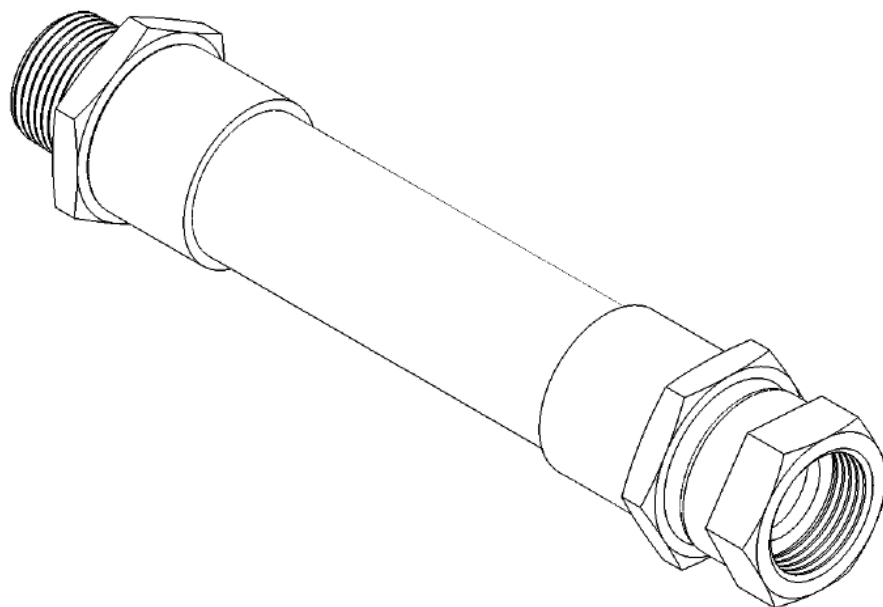


PROPRIETARY AND CONFIDENTIAL
THE INFORMATION CONTAINED IN THIS
DRAWING IS THE SOLE PROPERTY OF
BREAKER SERVICE INC. ANY
REPRODUCTION IN PART OR AS A WHOLE
WITHOUT THE WRITTEN PERMISSION OF
BREAKER SERVICE INC. IS PROHIBITED.
COPYRIGHT 2003

BREAKER SERVICE INC
800-826-5250 office 888-267-7690 fax

Dresser nut & gasket assy for
0.875" O.D. manifold pipe
on AA-7 mechanisms

SIZE A	DWG. NO. 37394AMK	REV. 0
SCALE 1:3	Date: 02-02-2003	SHEET 1 OF 1



PROPRIETARY AND CONFIDENTIAL
THE INFORMATION CONTAINED IN THIS
DRAWING IS THE SOLE PROPERTY OF
BREAKER SERVICE INC. ANY
REPRODUCTION IN PART OR AS A WHOLE
WITHOUT THE WRITTEN PERMISSION OF
BREAKER SERVICE INC. IS PROHIBITED.
COPYRIGHT 2003

BREAKER SERVICE INC			
800-826-5250 office 888-267-7690 fax			
3/4" Hose for AA-7 mechanisms on westinghouse OCBs Westinghouse part # 2283C33H08			
SIZE A	DWG. NO. 38035AMK	REV. 0	
SCALE 1:1	Date: 02-02-2003	SHEET 1 OF 1	



PROPERTY AND CONFIDENTIAL
THE INFORMATION CONTAINED IN THIS DRAWING IS
THE SOLE PROPERTY OF BREAKER SERVICE INC.
ANY REPRODUCTION IN PART OR AS A WHOLE
WITHOUT THE WRITTEN PERMISSION OF BREAKER
SERVICE INC. IS PROHIBITED. COPYRIGHT 2011

BREAKER SERVICE INC
800-826-5250 office 888-267-7690 fax

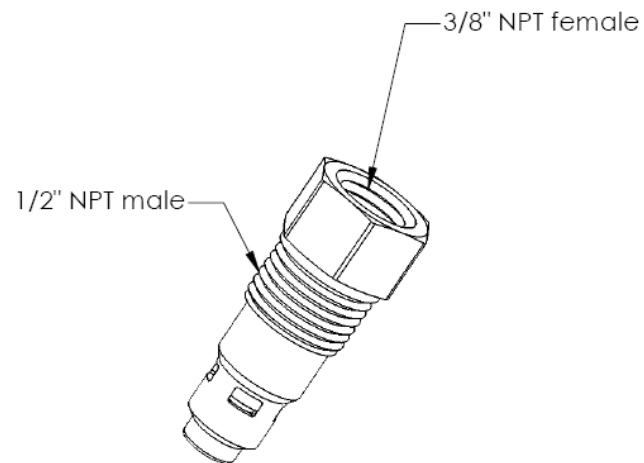
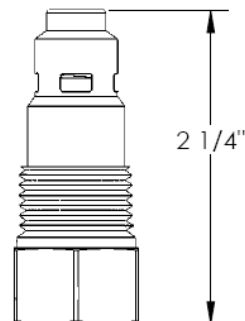
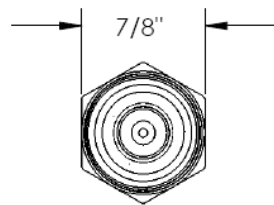
AA-7 AIR HOSE RUNS FROM PILOT
VALVE THAT TAPS OFF TO AIR
CHAMBER TIED TO LOW PRESSURE
ALARM AND LOW PRESSURE CUTOUT
1/4" OD x 16" approx length

DWG NO.

1010026

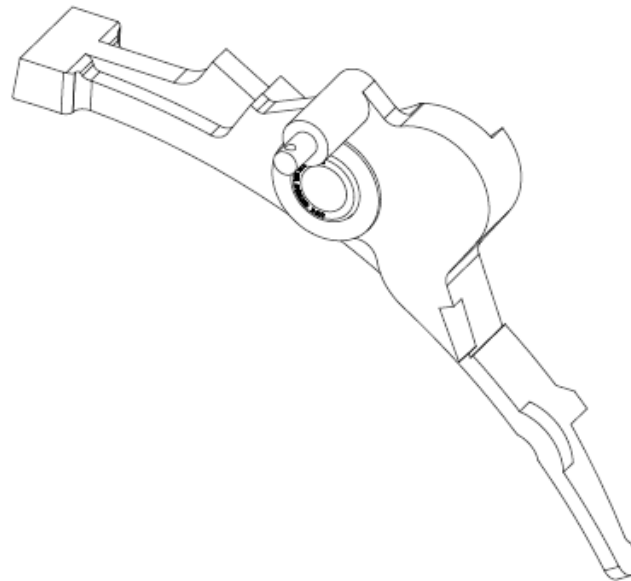
REV.

0



PROPRIETARY AND CONFIDENTIAL
THE INFORMATION CONTAINED IN THIS
DRAWING IS THE SOLE PROPERTY OF
BREAKER SERVICE INC. ANY
REPRODUCTION IN PART OR AS A WHOLE
WITHOUT THE WRITTEN PERMISSION OF
BREAKER SERVICE INC. IS PROHIBITED.
COPYRIGHT 2003

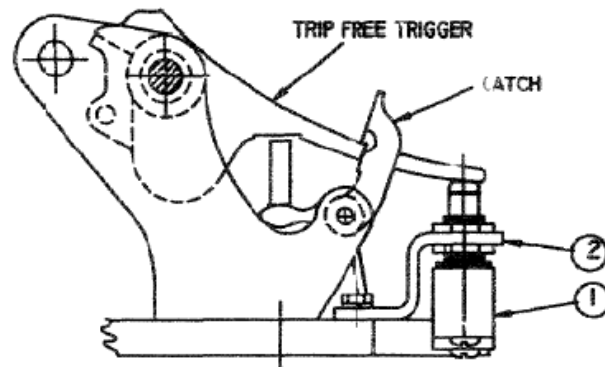
BREAKER SERVICE INC			
800-826-5250 office 888-267-7690 fax			
Check valve, intank			
Westinghouse # 513A271H01			
Siemens # 513A271H01			
SIZE A	DWG. NO.	37526AMK	REV. 0
SCALE 1:1	Date: 02-02-2003	SHEET 1 OF 1	



PROPRIETARY AND CONFIDENTIAL
THE INFORMATION CONTAINED IN THIS
DRAWING IS THE SOLE PROPERTY OF
BREAKER SERVICE INC.. ANY
REPRODUCTION IN PART OR AS A WHOLE
WITHOUT THE WRITTEN PERMISSION OF
BREAKER SERVICE INC. IS PROHIBITED.
COPYRIGHT 2003

BREAKER SERVICE INC			
800-826-5250 office 888-267-7690 fax			
Trip free trigger for Westinghouse AA-7 mech Westinghouse part # 1644 437			
SIZE A	DWG. NO. 38310AMK	REV. 0	
SCALE 1:1	Date: 05-15-2004	SHEET 1 OF 1	

ITEM	BSI #	DESCRIPTION	OEM	QTY
1	37606AMK	SWITCH	5861B73H01	1
2	37607AMK	BRACKET	5861B59H01	1
3		DRAWING	8931C34G01	1



INSTRUCTIONS

THE FUNCTION OF THE LATCH CHECK SWITCH IS TO INSURE THAT THE MECHANISM IS COMPLETELY RETRIEVED AND THE TRIP FREE LATCH SYSTEM IS FULLY ENGAGED BEFORE ANY CLOSING OR RECLOSING OPERATION IS ATTEMPTED ELECTRICALLY. BEFORE ATTEMPTING TO REPLACE THE SWITCH OPEN THE BREAKER AND ADJACENT DIS-CONNECT SWITCHES, DE-ENERGIZE ALL CONTROL AND AUXILLIARY POWER. CLOSE THE MAIN HAND SHUTOFF VALVE BETWEEN THE RESERVOIR AND THE CONTROL VALVE. DEPRESS MOMENTARILY THE PUSHBUTTON ON THE PIOT VALVE TO EXHAUST THE HIGH PRESSURE AIR BETWEEN THE SHUTOFF VALVE AND CONTROL VALVE. INSURE THE MECHANISM IS IN THE OPEN POSITION BEFORE REMOVING THE OLD SWITCH AND MTG BRACKET. INSTALL THE NEW MTG BRACKET WITHOUT THE SWITCH USING THE OLD MTG HARDWARE. INSTALL THE NEW SWITCH IN THE BRACKET AND ADJUST THE HEIGHT SO THE SWITCH "MAKES" CONTACT .03 TO .06 IN. BEFORE THE TRIP FREE TRIGGER AND CATCH ARE IN THE RESET POSITION. LISTEN FOR AN AUDIBLE "CLICK" FROM THE SWITCH. WIRE TO THE "NORMALLY OPEN" AND "COMMON" TERMINALS. PICTURE ON THIS DRAWING SHOW THE TRIGGER IN THE RESET POSITION WITH THE TRIP FREE LATCH SYSTEM ENGAGED AND SWITCH PLUNGER DEPRESSED TO .03 TO .06 IN BEYOND CONTACT "MAKE" POSITION.

PROPERTY AND CONFIDENTIAL
THE INFORMATION CONTAINED IN THIS DRAWING IS
THE SOLE PROPERTY OF BREAKER SERVICE INC.
ANY REPRODUCTION IN PART OR AS A WHOLE
WITHOUT THE WRITTEN PERMISSION OF BREAKER
SERVICE INC. IS PROHIBITED. COPYRIGHT 2011

BREAKER SERVICE INC
800-826-5250 office 888-267-7690 fax

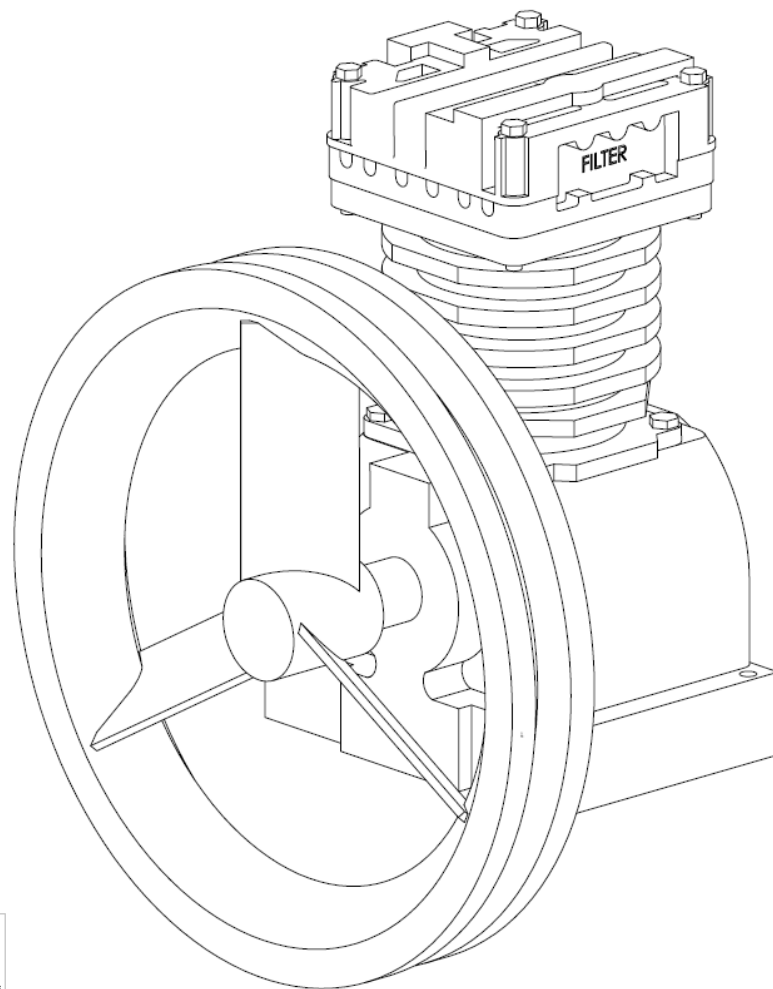
**AA-7 LATCH CHECK
SWITCH ASSEMBLY
REPLACES OLD SWITCH
1644 439**

DWG NO.

37605AMK

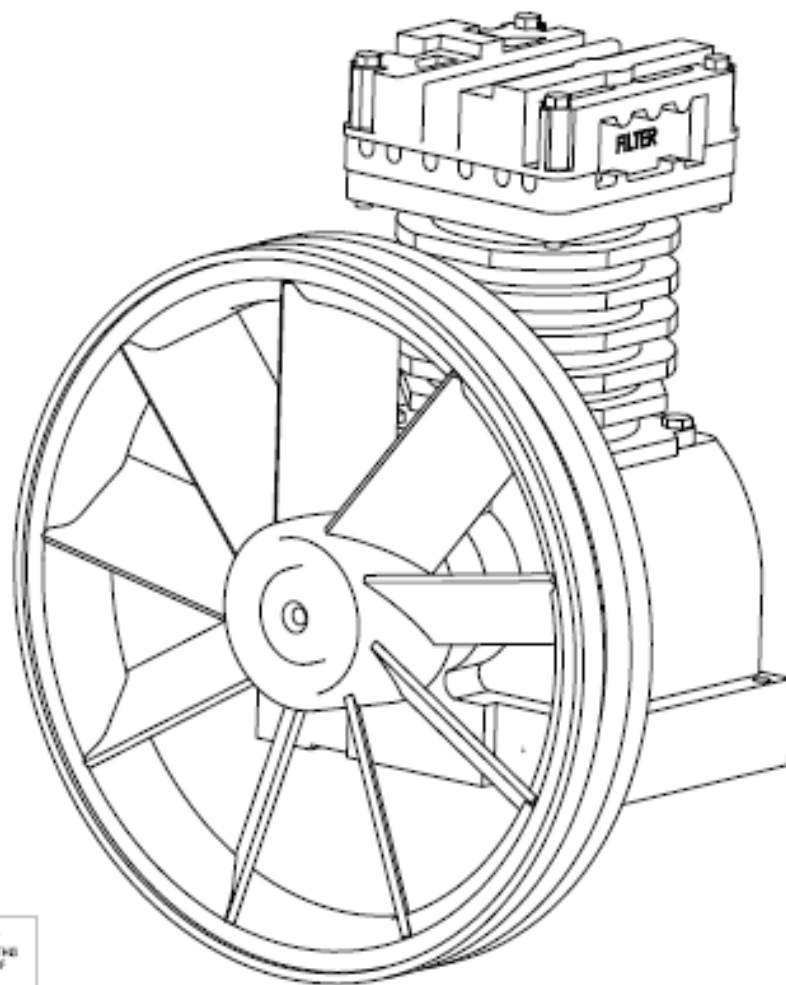
REV.

0



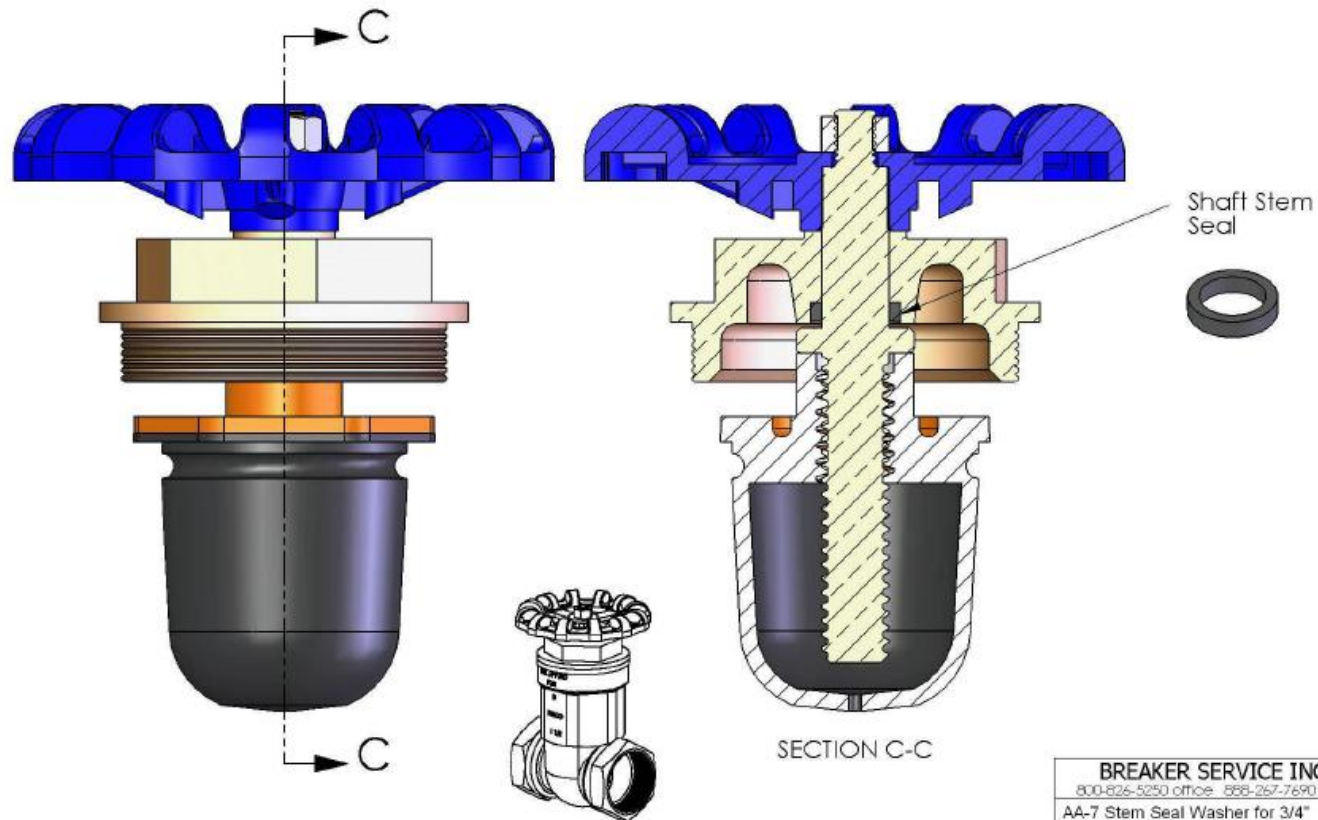
PROPRIETARY AND CONFIDENTIAL
THE INFORMATION CONTAINED IN THIS
DRAWING IS THE SOLE PROPERTY OF
BREAKER SERVICE INC. ANY
REPRODUCTION IN PART OR AS A WHOLE
WITHOUT THE WRITTEN PERMISSION OF
BREAKER SERVICE INC. IS PROHIBITED.
COPYRIGHT 2002

BREAKER SERVICE INC			
800-826-5250 office 888-267-7690 fax			
Compressor Replaces RED Emgo FW-20			
SIZE A	DWG. NO.	37289AMK / FOE10 REV.	
SCALE:1:1	Date: 02-02-2002	SHEET 1 OF 1	



PROPRIETARY AND CONFIDENTIAL
THE INFORMATION CONTAINED IN THIS
DRAWING IS THE SOLE PROPERTY OF
BREAKER SERVICE INC. ANY
REPRODUCTION IN PART OR AS A WHOLE
WITHOUT THE WRITTEN PERMISSION OF
BREAKER SERVICE INC. IS PROHIBITED.
COPYRIGHT 2002

BREAKER SERVICE INC			
800-826-5250 office 888-257-7690 fax			
Compressor			
Replaces BLUE Englo FW-50			
REV	DWG. NO.		REV
A	37287AMK		0
SCALE	Date	02-02-2002	SHEET 1 OF 1



PROPRIETARY AND CONFIDENTIAL
 THE INFORMATION CONTAINED IN THIS
 DRAWING IS THE SOLE PROPERTY OF
 BREAKER SERVICE INC. ANY
 REPRODUCTION IN PART OR AS A WHOLE
 WITHOUT THE WRITTEN PERMISSION OF
 BREAKER SERVICE INC. IS PROHIBITED.
 COPYRIGHT 2004

Complete valve shown
 for reference only.
 Valve body not included
 in repair kit.

BREAKER SERVICE INC			
800-826-5250 office 888-267-7690 fax			
AA-7 Stem Seal Washer for 3/4" air shut off valve			
SIZE	DWG. NO.	REV.	
A	37943AMK	0	
SCALE: 1:1	Date: 06-09-2004	SHEET 01 OF 1	



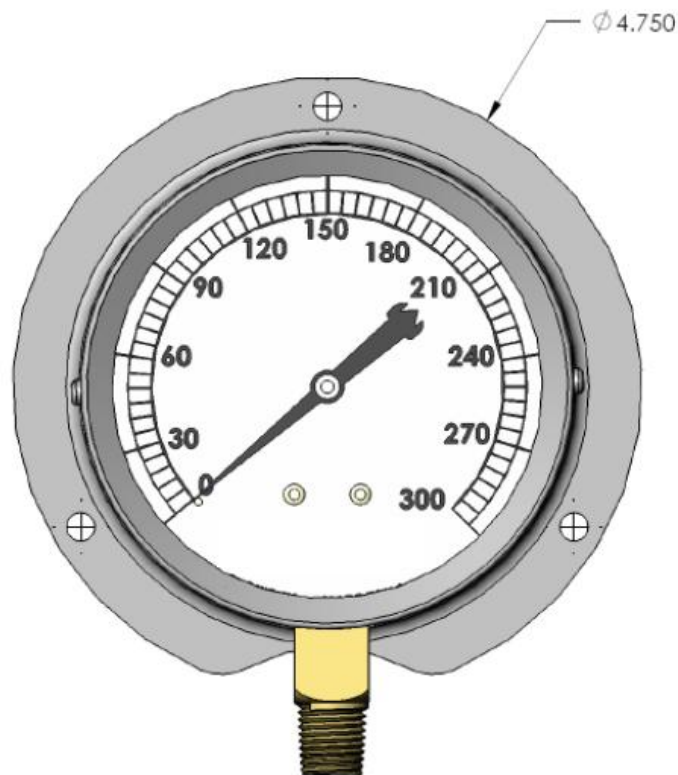
PROPRIETARY AND CONFIDENTIAL

THE INFORMATION CONTAINED IN THIS
DRAWING IS THE SOLE PROPERTY OF
BREAKER SERVICE INC. ANY
REPRODUCTION IN PART OR AS A WHOLE
WITHOUT THE WRITTEN PERMISSION OF
BREAKER SERVICE INC. IS PROHIBITED.
COPYRIGHT 2005

BREAKER SERVICE INC
800-824-5250 office 888-267-7490 fax

Safety valve for AA-7 mechanism
Westinghouse #153A160H05
Replaces Westinghouse # 1718741
1/4" NPT
175psi

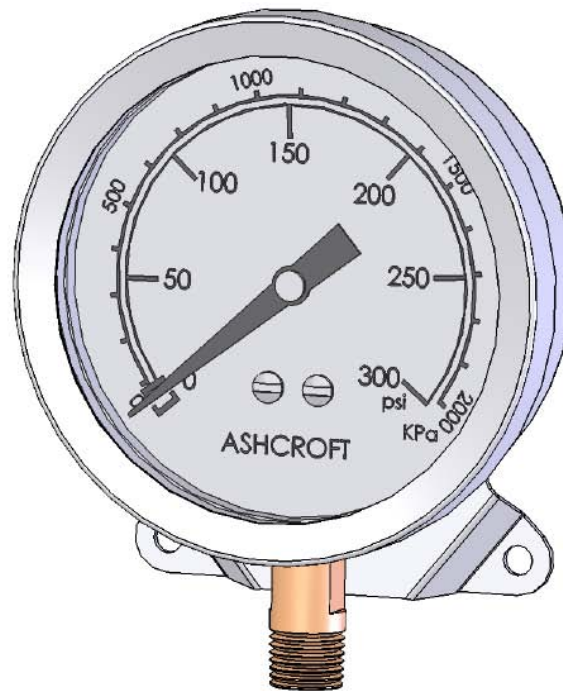
SHEET	DWG. NO.	REV.
A	39848AMK	0
SCALE: 1:1 Date: 01-10-2005		SHEET 1 OF 1



PROPRIETARY AND CONFIDENTIAL
THE INFORMATION CONTAINED IN THIS
DRAWING IS THE SOLE PROPERTY OF
BREAKER SERVICE INC. ANY
REPRODUCTION IN PART OR AS A WHOLE
WITHOUT THE WRITTEN PERMISSION OF
BREAKER SERVICE INC. IS PROHIBITED.
COPYRIGHT 2005

BREAKER SERVICE INC.
800-826-5250 office 888-247-7690 fax
Pressure Gauge for some older
Westinghouse AA-7 & AA-10
mechanisms, 0-300 psig, flange
mounting, bottom connection,
1/4" NPT

DATE	DWG. NO.	
A	40150AMK	
SCALE: 1:1	Date: 02-03-2005	SHEET 1 OF



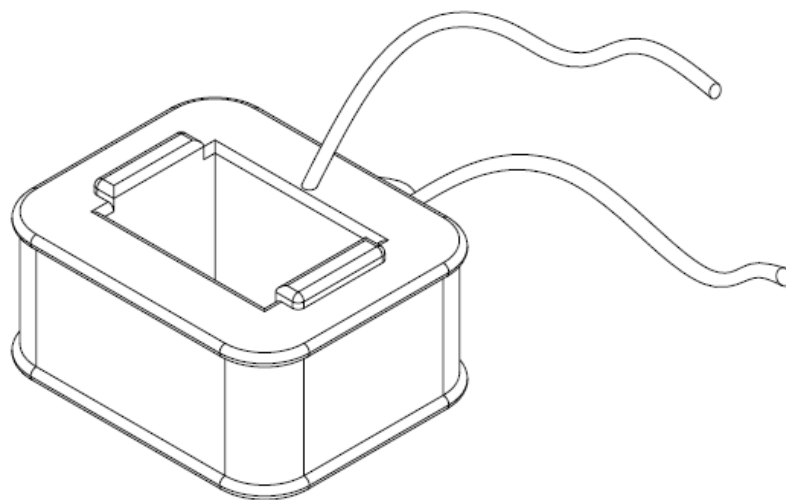
PROPRIETARY AND CONFIDENTIAL
THE INFORMATION CONTAINED IN THIS
DRAWING IS THE SOLE PROPERTY OF
BREAKER SERVICE INC. ANY
REPRODUCTION IN PART OR AS A WHOLE
WITHOUT THE WRITTEN PERMISSION OF
BREAKER SERVICE INC. IS PROHIBITED.
COPYRIGHT 2006

BREAKER SERVICE INC

800-826-5250 office 888-267-7690 fax

Gauge, air pressure, used on
Westinghouse and Siemens type
SP breakers with AA-7 and SA-7
mechanisms. Westinghouse /
Siemens part # 1650B29H03

SIZE A	DWG. NO. 39949AMK	REV. 0
SCALE 1:1	Date: 02-02-2006	SHEET 1 OF 1



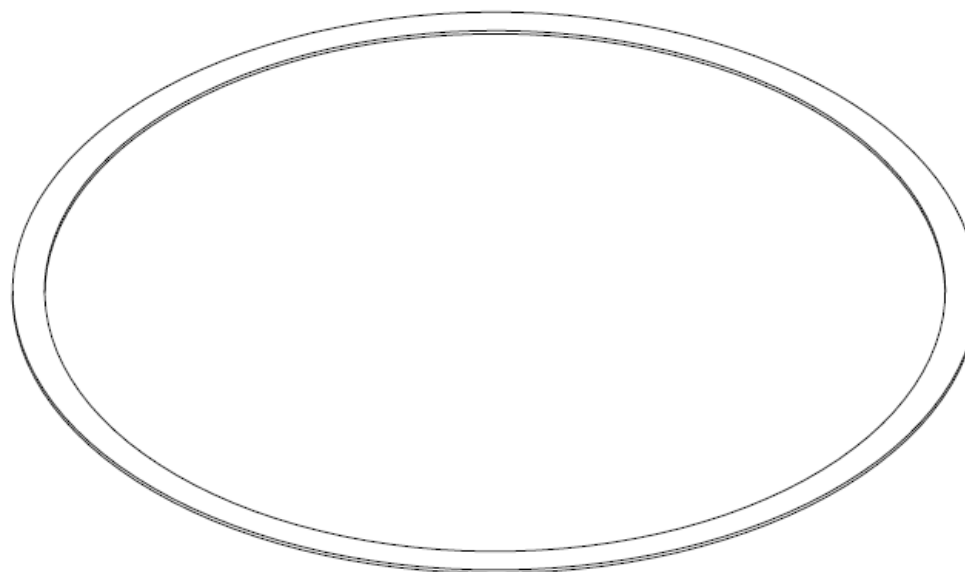
Replaces Westinghouse # 1616101

PROPRIETARY AND CONFIDENTIAL
THE INFORMATION CONTAINED IN THIS
DRAWING IS THE SOLE PROPERTY OF
BREAKER SERVICE INC.. ANY
REPRODUCTION IN PART OR AS A WHOLE
WITHOUT THE WRITTEN PERMISSION OF
BREAKER SERVICE INC. IS PROHIBITED.
COPYRIGHT 2002

BREAKER SERVICE INC
800-826-5250 office 888-267-7690 fax

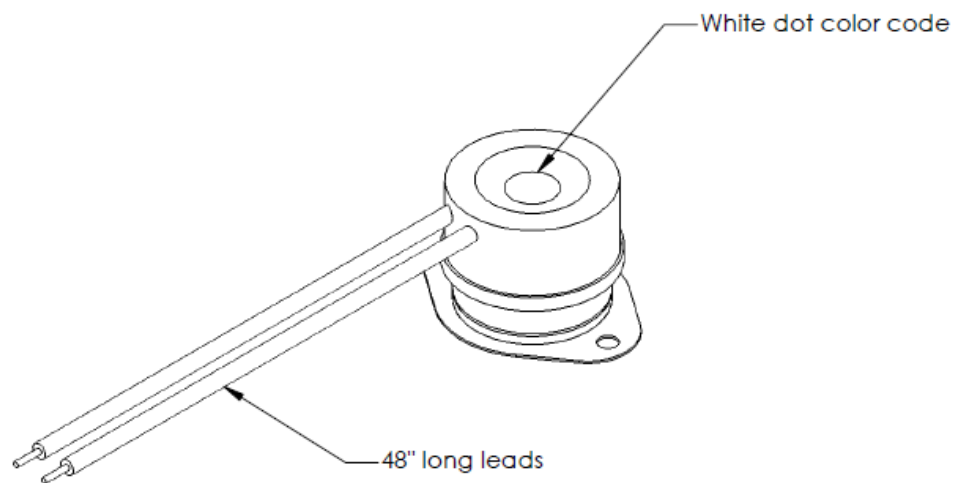
Coil, trip for SA-7, AA-7, and
other breaker mechanisms.
125vdc

SIZE A	DWG. NO. 37460AMK	REV. 0
SCALE:1:2	DATE: 02-02-2002	SHEET 1 OF 1



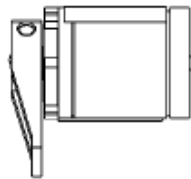
PROPRIETARY AND CONFIDENTIAL
THE INFORMATION CONTAINED IN THIS
DRAWING IS THE SOLE PROPERTY OF
BREAKER SERVICE INC.. ANY
REPRODUCTION IN PART OR AS A WHOLE
WITHOUT THE WRITTEN PERMISSION OF
BREAKER SERVICE INC. IS PROHIBITED.
COPYRIGHT 2005

BREAKER SERVICE INC			
800-826-5250 office 888-267-7690 fax			
Gasket, main cylinder, top & bottom for Westinghouse/Siemens AA-7 & SA-7 mechanism West./Siemens part # 1644464, superceded by # 23D7943H02			
SIZE A	DWG. NO. 38063AMK	REV. 0	
SCALE: 1:1	Date: 01-10-2005	SHEET 1 OF 1	

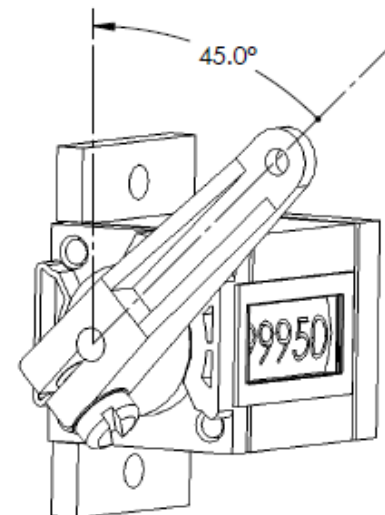
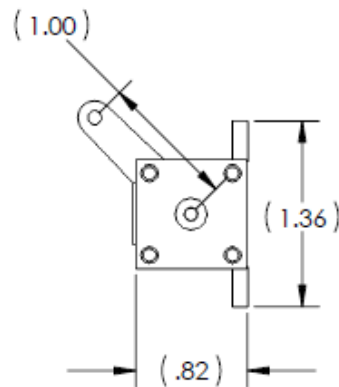
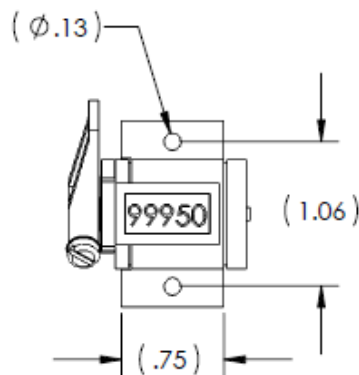


PROPRIETARY AND CONFIDENTIAL
THE INFORMATION CONTAINED IN THIS
DRAWING IS THE SOLE PROPERTY OF
BREAKER SERVICE INC. ANY
REPRODUCTION IN PART OR AS A WHOLE
WITHOUT THE WRITTEN PERMISSION OF
BREAKER SERVICE INC. IS PROHIBITED.
COPYRIGHT 2003

BREAKER SERVICE INC		
800-826-5250 office 888-267-7690 fax		
Thermostat		
Westinghouse # 266C072H09		
Color code: one white dot		
SIZE A	DWG. NO. 37691AMK	REV. 0
SCALE 1:1	Date: 02-02-2003	SHEET 1 OF 1



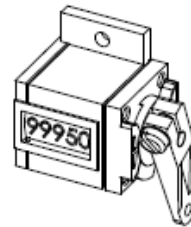
Ratchet action is 45 degrees counter clock wise when looking into the shaft. The lever arm is adjustable 360 degrees.



Replacement for:
GE # 0138A7031P1 - ATB breaker
GE # 0137A0180P6 - ATB breaker

PROPRIETARY AND CONFIDENTIAL
THE INFORMATION CONTAINED IN THIS
DRAWING IS THE SOLE PROPERTY OF
BREAKER SERVICE INC. ANY
REPRODUCTION IN PART OR AS A WHOLE
WITHOUT THE WRITTEN PERMISSION OF
BREAKER SERVICE INC. IS PROHIBITED.
COPYRIGHT 2003

BREAKER SERVICE INC			
800-826-5250 office 888-267-7890 fax			
Operations counter for circuit breakers			
SHEET	DWG. NO.	REV.	
A	37728AMK	0	
SCALE 2:1	Date: 02-02-2003	SHEET 1 OF 1	



PROPRIETARY AND CONFIDENTIAL
THE INFORMATION CONTAINED IN THIS
DRAWING IS THE SOLE PROPERTY OF
BREAKER SERVICE INC. ANY
REPRODUCTION IN PART OR AS A WHOLE
WITHOUT THE WRITTEN PERMISSION OF
BREAKER SERVICE INC. IS PROHIBITED.
COPYRIGHT 2003

BREAKER SERVICE INC			
800-826-8250 office 888-267-7690 fax			
Operations Counter for Westinghouse AA-7 mech Westinghouse part # 491759			
SIZE A	DWG. NO. 38303AMK	REV. 0	
SCALE 1:1	Date: 05-15-2004	SHEET 1 OF 1	



PROPERTY AND CONFIDENTIAL
THE INFORMATION CONTAINED IN THIS
DRAWING IS THE SOLE PROPERTY OF
BREAKER SERVICE INC. ANY REPRODUCTION
IN PART OR AS A WHOLE WITHOUT THE
WRITTEN PERMISSION OF BREAKER SERVICE
INC. IS PROHIBITED. COPYRIGHT 2000

BREAKER SERVICE INC
800-826-5250 office 888-267-7690 fax

**AIR TANK FOR AA-7 or SA-7
MECH ON WESTINGHOUSE OR
SIEMEN TYPE SP SF6 CIRCUIT
BREAKERS**

DWG NO.

39870AMK

REV.

0



PROPERTY AND CONFIDENTIAL
THE INFORMATION CONTAINED IN THIS
DRAWING IS THE SOLE PROPERTY OF
BREAKER SERVICE INC. ANY REPRODUCTION
IN PART OR AS A WHOLE WITHOUT THE
WRITTEN PERMISSION OF BREAKER SERVICE
INC. IS PROHIBITED. COPYRIGHT 2000

BREAKER SERVICE INC
800-826-5250 office 888-267-7690 fax

AIR TANK,
WH AA-7 MECHANISM

DWG NO.	37613AMK	REV.	0
---------	----------	------	---



PROPERTY AND CONFIDENTIAL
THE INFORMATION CONTAINED IN THIS
DRAWING IS THE SOLE PROPERTY OF
BREAKER SERVICE INC. ANY REPRODUCTION
IN PART OR AS A WHOLE WITHOUT THE
WRITTEN PERMISSION OF BREAKER SERVICE
INC. IS PROHIBITED. COPYRIGHT 2000

BREAKER SERVICE INC
800-826-5250 office 888-267-7690 fax

AIR TANK
WESTINGHOUSE
AA-7

DWG NO.	45230AMK	REV.	0
---------	----------	------	---



PROPERTY AND CONFIDENTIAL
THE INFORMATION CONTAINED IN THIS
DRAWING IS THE SOLE PROPERTY OF
BREAKER SERVICE INC. ANY REPRODUCTION
IN PART OR AS A WHOLE WITHOUT THE
WRITTEN PERMISSION OF BREAKER SERVICE
INC. IS PROHIBITED. COPYRIGHT 2009

BREAKER SERVICE INC
800-826-1250 office 888-267-7690 fax

Air tank

DWG NO.

45237AMK

REV.

0